

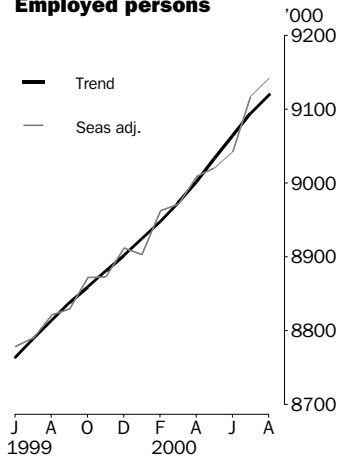


LABOUR FORCE

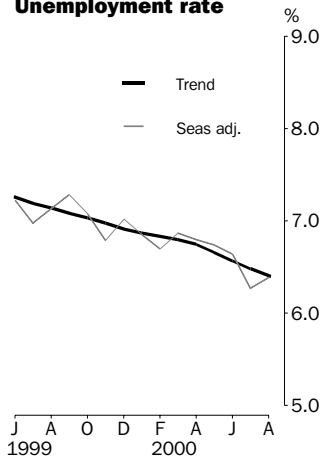
AUSTRALIA
PRELIMINARY

EMBARGO: 11:30AM (CANBERRA TIME) THURS 7 SEPT 2000

Employed persons



Unemployment rate



AUGUST KEY FIGURES

TREND

	Jul 2000	Aug 2000	monthly change
Employed persons ('000)	9 094.4	9 119.2	0.3 %
Unemployed persons ('000)	630.1	623.2	-1.1 %
Unemployment rate (%)	6.5	6.4	-0.1 pts
Participation rate (%)	63.9	63.9	0.1 pts

SEASONALLY ADJUSTED

	Jul 2000	Aug 2000	monthly change
Employed persons ('000)	9 117.8	9 141.8	24.1
Unemployed persons ('000)	609.7	623.7	13.9
Unemployment rate (%)	6.3	6.4	0.1 pts
Participation rate (%)	63.9	64.1	0.2 pts

AUGUST KEY POINTS

TREND ESTIMATES

EMPLOYMENT

- has continued to rise steadily, reaching 9,119,200.

UNEMPLOYMENT

- decreased to 623,200.

UNEMPLOYMENT RATE

- decreased by 0.1 percentage point to 6.4%

PARTICIPATION RATE

- increased slightly, but the rounded estimate remained at 63.9%.

SEASONALLY ADJUSTED ESTIMATES

EMPLOYMENT

- increased by 24,100 to 9,141,800. Full-time employment rose by 4,300 to 6,720,500 and part-time employment rose by 19,800 to 2,421,300.

UNEMPLOYMENT

- increased by 13,900 to 623,700. The number of persons looking for full-time work rose by 16,700 to 457,300 while persons looking for part-time work fell by 2,800 to 166,400.

UNEMPLOYMENT RATE

- increased by 0.1 percentage point to 6.4%. The male rate rose by 0.1 percentage point to 6.6% and the female rate rose by 0.1 percentage point to 6.2%.
- NSW 5.5% (5.4% last month); Vic 6.2% (6.2%); Qld 7.5% (7.6%); SA 7.6% (7.8%); WA 6.4% (6.1%); Tas 10.0% (8.7%).

PARTICIPATION RATE

- increased by 0.2 percentage points to 64.1%

- For further information about these and related statistics, contact Mark Webb on 02 6252 6525, or the National Information Service on 1300 135 070.

NOTES

FORTHCOMING ISSUES

<i>ISSUE</i>	<i>RELEASE DATE</i>
September 2000	12 October 2000
October 2000	09 November 2000
November 2000	07 December 2000
December 2000	11 January 2001
January 2001	08 February 2001
February 2001	15 March 2001



OLYMPIC GAMES

Due to operational difficulties in conducting the monthly labour force survey in Sydney during the Olympic Games, the September 2000 survey is being conducted one week earlier in New South Wales than originally scheduled (i.e interviewing commenced on 4 September). There is no change to survey timing in the other States and Territories, where interviewing will commence on 11 September as originally scheduled. The effect of this change on survey results is expected to be minor, and is likely to be obscured by the effects of the Olympic Games on labour market activity in and around Sydney during September and surrounding months.



FORTHCOMING CHANGES

The Labour Force Survey (LFS) questionnaire is being redesigned to better reflect current labour market phenomena and contemporary user needs. The new questionnaire is scheduled to be implemented in March and April 2001. More information is available in *Information Paper: Labour Force Survey Questionnaire Redesign* (Cat. no. 6294.0), which was released on 14 March 2000.



SAMPLING ERRORS

The estimates in this publication are based on a sample survey. Because the entire population is not enumerated, the published estimates and the movements derived from them are subject to sampling variability. Standard errors give a measure of this variability and appear on pages 30 and 31.

The 95% confidence intervals below provide another way of looking at the variability inherent in estimates from sample surveys. The interval bounded by the two limits is the 95% confidence interval. A 95% confidence interval indicates that we are 95% confident that the upper and lower limits enclose the true value of the estimate.

<i>SEASONALLY ADJUSTED DATA SERIES</i>	<i>MOVEMENTS</i>	
	<i>JULY 2000 TO AUGUST 2000</i>	
	<i>Monthly change</i>	<i>95% Confidence interval</i>
Total employment	24 100	-12 300 to 60 500
Total unemployment	13 900	100 to 27 700
Unemployment rate	0.1 pts	-0.1 pts to 0.3 pts
Participation rate	0.2 pts	0.0 pts to 0.4 pts

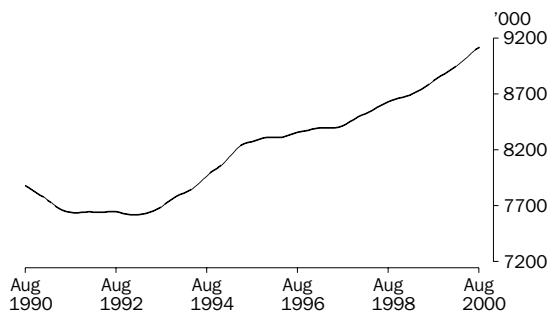


Dennis Trewin
Australian Statistician

PRINCIPAL LABOUR FORCE SERIES: Trend estimates

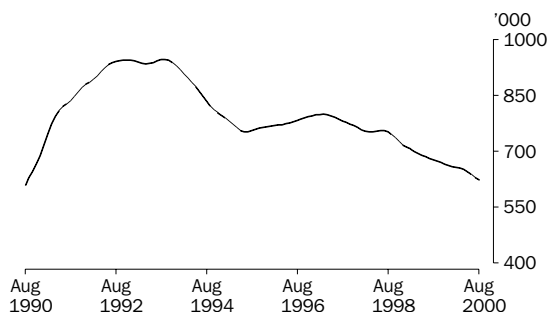
EMPLOYED PERSONS

The trend estimate of employed persons rose strongly from a low of 7,615,300 in January 1993 until mid 1995. The trend then continued to rise at a slower rate until May 1997. Since then, the trend estimate has shown stronger growth, to stand at 9,119,200 in August 2000 .



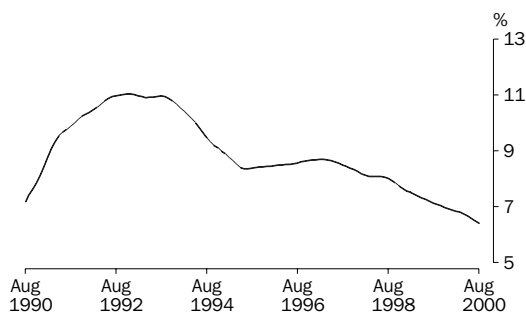
UNEMPLOYED PERSONS

The trend estimate of unemployed persons peaked at 946,800 in September 1993, before falling rapidly to 751,900 in June 1995. The trend then rose slowly for almost two years to 799,400 in March 1997. The trend estimate has generally been falling since then, and was 623,200 in August 2000.



UNEMPLOYMENT RATE

After reaching a high of 11.0% in mid 1992, the trend unemployment rate remained steady for twelve months, before falling rapidly to 8.3% in July 1995. The trend then rose slowly, reaching 8.7% in March 1997. Apart from a small increase in mid 1998, the trend estimate has since decreased, and stood at 6.4% in August 2000 .

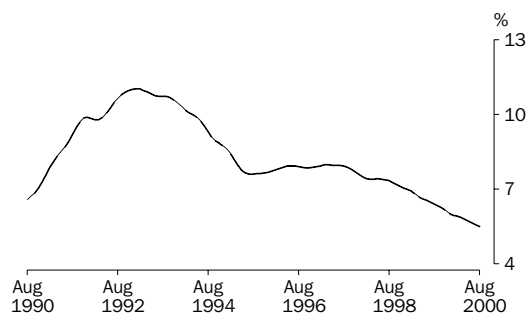


STATES: Trend estimates

UNEMPLOYMENT RATE

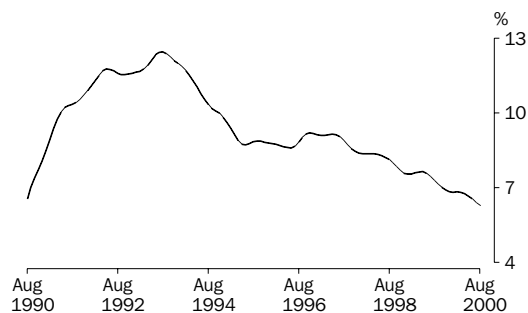
NEW SOUTH WALES

From a peak of 11.0% in January 1993, the trend unemployment rate for New South Wales fell steadily to 7.6% in July 1995. The trend estimate then increased gradually, reaching 8.0% in April 1997. Since then, the trend unemployment rate has declined, to stand at 5.5% in August 2000.



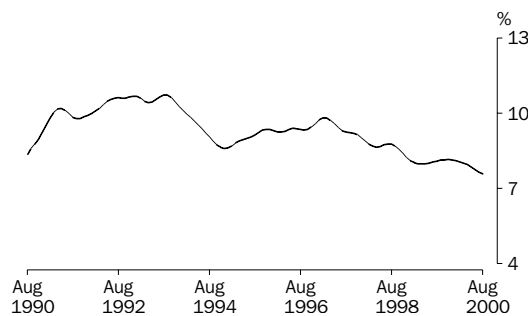
VICTORIA

The trend estimate of the unemployment rate for Victoria decreased sharply from a peak of 12.4% in August 1993 to 8.7% in June 1995. The trend then remained steady for the next year before rising to 9.2% in November 1996. The trend estimate has since generally fallen to stand at 6.3% in August 2000.



QUEENSLAND

The trend estimate of the unemployment rate for Queensland decreased from a peak of 10.7% in August 1993 to 8.6% in December 1994. The trend then rose to 9.8% in February 1997. Apart from two small increases in 1998 and 1999, the trend estimate has decreased since February 1997, and stood at 7.6% in August 2000.

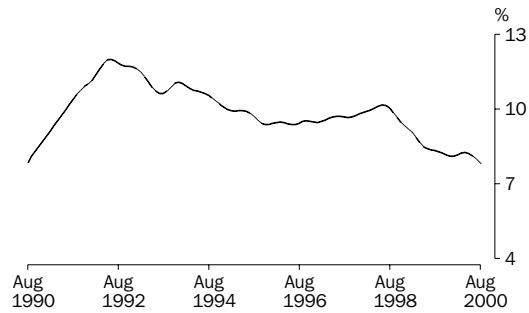


STATES: Trend estimates

UNEMPLOYMENT RATE

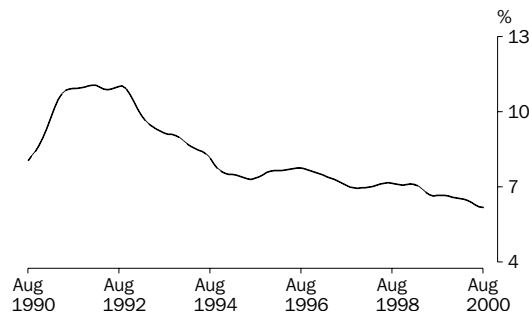
SOUTH AUSTRALIA

The trend unemployment rate for South Australia peaked at 12.0% in June 1992. The trend then fell steadily to 9.4% in November 1995 before rising slowly to 10.2% in June 1998. The trend has since decreased and stood at 7.8% in August 2000.



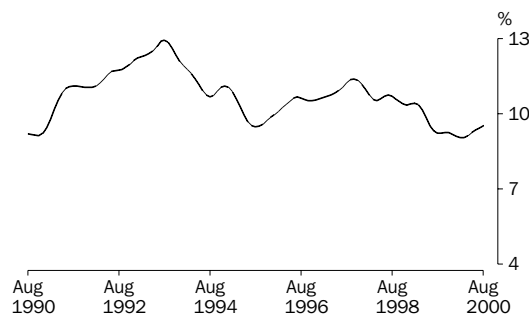
WESTERN AUSTRALIA

After reaching 11.1% in January 1992, the trend estimate of the unemployment rate for Western Australia remained relatively steady until late 1992. The trend estimate then fell to 7.3% in July 1995. After rising to 7.7% in August 1996 the trend estimate has since generally fallen to 6.2% in August 2000.



TASMANIA

The trend estimate of the unemployment rate for Tasmania fell from a peak of 12.9% in August 1993 to 9.5% in August 1995. The trend estimate then rose to 11.4% in October 1997, before declining to 9.0% in February 2000. Recently the trend has risen to stand at 9.5% in August 2000.



LABOUR FORCE STATUS (AGED 15 AND OVER): Original

Month	EMPLOYED.....			UNEMPLOYED.....			Labour force	Not in labour force	Civilian population aged 15 and over	Unemployment rate	Participation rate
	Full time	Part time	Total	Looking for f/t work	Looking for p/t work	Total					
	'000	'000	'000	'000	'000	'000					
MALES											
1999											
June	4 316.8	660.8	4 977.6	321.9	49.8	371.7	5 349.4	2 027.4	7 376.8	6.9	72.5
July	4 373.7	618.8	4 992.4	302.2	57.2	359.4	5 351.8	2 034.2	7 386.0	6.7	72.5
August	4 323.8	620.8	4 944.5	316.4	66.4	382.9	5 327.4	2 067.9	7 395.3	7.2	72.0
September	4 387.7	622.0	5 009.7	331.3	72.5	403.8	5 413.6	1 991.1	7 404.6	7.5	73.1
October	4 376.4	623.0	4 999.4	307.2	61.4	368.6	5 368.1	2 048.0	7 416.0	6.9	72.4
November	4 378.8	608.7	4 987.5	301.3	48.9	350.3	5 337.8	2 089.6	7 427.4	6.6	71.9
December	4 462.2	617.4	5 079.6	322.0	65.7	387.7	5 467.3	1 971.5	7 438.7	7.1	73.5
2000											
January	4 367.2	611.0	4 978.2	344.6	62.5	407.1	5 385.3	2 062.7	7 448.0	7.6	72.3
February	4 420.6	613.8	5 034.3	326.5	66.1	392.6	5 427.0	2 030.2	7 457.2	7.2	72.8
March	4 391.2	642.6	5 033.8	310.9	71.3	382.2	5 415.9	2 050.4	7 466.4	7.1	72.5
April	4 400.4	666.2	5 066.6	296.3	68.5	364.9	5 431.4	2 044.1	7 475.5	6.7	72.7
May	4 407.9	660.9	5 068.9	297.8	58.7	356.5	5 425.4	2 059.2	7 484.6	6.6	72.5
June	4 433.3	651.2	5 084.5	293.2	55.1	348.3	5 432.8	2 061.0	7 493.8	6.4	72.5
July	4 480.1	653.5	5 133.5	277.3	60.0	337.3	5 470.8	2 032.2	7 503.0	6.2	72.9
August	4 399.1	660.9	5 060.0	295.4	57.1	352.5	5 412.5	2 099.7	7 512.2	6.5	72.0
FEMALES											
1999											
June	2 132.5	1 683.5	3 816.0	175.8	100.9	276.7	4 092.7	3 512.7	7 605.4	6.8	53.8
July	2 172.6	1 659.4	3 832.0	160.4	104.2	264.6	4 096.6	3 517.9	7 614.5	6.5	53.8
August	2 109.6	1 677.5	3 787.1	166.8	103.1	269.9	4 057.0	3 566.6	7 623.6	6.7	53.2
September	2 165.0	1 733.2	3 898.2	187.7	121.8	309.5	4 207.7	3 425.1	7 632.7	7.4	55.1
October	2 190.8	1 698.9	3 889.7	173.9	100.4	274.4	4 164.1	3 479.1	7 643.2	6.6	54.5
November	2 178.0	1 727.3	3 905.3	167.5	92.1	259.6	4 164.9	3 488.7	7 653.7	6.2	54.4
December	2 263.8	1 703.4	3 967.2	184.7	94.8	279.5	4 246.7	3 417.4	7 664.1	6.6	55.4
2000											
January	2 208.0	1 587.8	3 795.8	188.5	100.7	289.2	4 085.0	3 587.3	7 672.3	7.1	53.2
February	2 189.2	1 681.6	3 870.7	200.8	125.2	326.1	4 196.8	3 483.7	7 680.5	7.8	54.6
March	2 201.2	1 715.0	3 916.2	197.4	120.6	318.0	4 234.2	3 454.5	7 688.7	7.5	55.1
April	2 212.6	1 725.6	3 938.2	181.8	112.6	294.4	4 232.6	3 464.4	7 697.0	7.0	55.0
May	2 200.7	1 746.9	3 947.6	186.0	100.4	286.4	4 234.1	3 471.3	7 705.3	6.8	54.9
June	2 222.3	1 749.1	3 971.4	152.5	107.7	260.3	4 231.7	3 482.0	7 713.7	6.2	54.9
July	2 296.1	1 725.0	4 021.1	145.0	94.2	239.2	4 260.3	3 462.4	7 722.7	5.6	55.2
August	2 232.9	1 755.6	3 988.4	149.0	99.8	248.8	4 237.2	3 494.4	7 731.6	5.9	54.8
PERSONS											
1999											
June	6 449.3	2 344.3	8 793.6	497.8	150.7	648.5	9 442.1	5 540.1	14 982.1	6.9	63.0
July	6 546.3	2 278.1	8 824.4	462.6	161.4	624.0	9 448.4	5 552.1	15 000.5	6.6	63.0
August	6 433.4	2 298.2	8 731.6	483.2	169.6	652.8	9 384.4	5 634.5	15 018.9	7.0	62.5
September	6 552.7	2 355.2	8 908.0	519.0	194.3	713.3	9 621.2	5 416.1	15 037.4	7.4	64.0
October	6 567.2	2 321.9	8 889.2	481.1	161.9	643.0	9 532.2	5 527.0	15 059.2	6.7	63.3
November	6 556.8	2 336.0	8 892.8	468.8	141.1	609.9	9 502.7	5 578.3	15 081.0	6.4	63.0
December	6 726.0	2 320.8	9 046.8	506.7	160.5	667.2	9 714.0	5 388.9	15 102.9	6.9	64.3
2000											
January	6 575.2	2 198.8	8 773.9	533.2	163.2	696.3	9 470.3	5 650.0	15 120.3	7.4	62.6
February	6 609.8	2 295.3	8 905.1	527.3	191.4	718.7	9 623.8	5 513.9	15 137.7	7.5	63.6
March	6 592.4	2 357.6	8 950.0	508.3	191.8	700.2	9 650.1	5 504.9	15 155.1	7.3	63.7
April	6 613.0	2 391.8	9 004.8	478.2	181.1	659.3	9 664.1	5 508.5	15 172.5	6.8	63.7
May	6 608.6	2 407.9	9 016.5	483.9	159.1	643.0	9 659.4	5 530.5	15 190.0	6.7	63.6
June	6 655.6	2 400.2	9 055.9	445.7	162.9	608.6	9 664.5	5 543.0	15 207.5	6.3	63.6
July	6 776.2	2 378.4	9 154.6	422.4	154.2	576.5	9 731.1	5 494.6	15 225.7	5.9	63.9
August	6 631.9	2 416.5	9 048.4	444.4	156.9	601.3	9 649.7	5 594.1	15 243.9	6.2	63.3

LABOUR FORCE STATUS (AGED 15 AND OVER): Seasonally adjusted

Month	EMPLOYED.....			UNEMPLOYED.....			Labour force '000	Unemp- loyment rate %	Partic- ipation rate %
	Full time '000	Part time '000	Total '000	Looking for f/t work '000	Looking for p/t work '000	Total '000			
MALES									
1999									
June	4 334.0	636.5	4 970.5	332.5	56.7	389.2	5 359.6	7.3	72.7
July	4 348.9	628.4	4 977.3	310.8	64.4	375.2	5 352.6	7.0	72.5
August	4 373.8	619.0	4 992.7	320.6	69.8	390.5	5 383.2	7.3	72.8
September	4 373.1	613.3	4 986.4	325.9	66.3	392.2	5 378.6	7.3	72.6
October	4 369.4	620.2	4 989.7	326.7	64.2	390.9	5 380.6	7.3	72.6
November	4 381.0	610.4	4 991.4	310.2	55.9	366.0	5 357.4	6.8	72.1
December	4 390.2	616.5	5 006.7	326.4	62.6	388.9	5 395.6	7.2	72.5
2000									
January	4 367.1	636.0	5 003.0	317.2	60.2	377.4	5 380.5	7.0	72.2
February	4 412.2	644.4	5 056.6	299.8	60.3	360.1	5 416.7	6.6	72.6
March	4 410.2	635.6	5 045.8	304.1	62.2	366.3	5 412.1	6.8	72.5
April	4 416.9	656.8	5 073.7	302.3	65.9	368.3	5 441.9	6.8	72.8
May	4 431.3	649.1	5 080.4	302.8	59.8	362.7	5 443.1	6.7	72.7
June	4 451.8	626.5	5 078.3	302.9	62.9	365.8	5 444.1	6.7	72.6
July	4 454.4	663.6	5 118.1	285.1	67.6	352.7	5 470.7	6.4	72.9
August	4 449.9	659.6	5 109.4	299.3	59.8	359.1	5 468.6	6.6	72.8
FEMALES									
1999									
June	2 156.9	1 650.8	3 807.7	184.2	109.5	293.7	4 101.4	7.2	53.9
July	2 140.9	1 671.1	3 812.0	171.5	112.6	284.1	4 096.1	6.9	53.8
August	2 144.9	1 683.1	3 828.1	176.7	110.3	287.0	4 115.0	7.0	54.0
September	2 150.8	1 691.7	3 842.6	188.7	112.9	301.6	4 144.1	7.3	54.3
October	2 183.5	1 698.7	3 882.2	182.2	102.6	284.8	4 167.0	6.8	54.5
November	2 178.2	1 703.2	3 881.4	178.4	101.5	279.9	4 161.2	6.7	54.4
December	2 201.6	1 704.0	3 905.7	182.8	100.7	283.4	4 189.1	6.8	54.7
2000									
January	2 204.0	1 696.4	3 900.3	175.3	102.1	277.4	4 177.7	6.6	54.5
February	2 192.8	1 713.0	3 905.8	175.2	108.2	283.4	4 189.3	6.8	54.5
March	2 221.9	1 703.1	3 925.0	188.2	107.3	295.5	4 220.5	7.0	54.9
April	2 227.7	1 706.8	3 934.5	180.7	107.5	288.2	4 222.7	6.8	54.9
May	2 221.9	1 718.0	3 939.9	188.5	100.9	289.4	4 229.3	6.8	54.9
June	2 248.5	1 715.2	3 963.7	160.2	117.0	277.2	4 240.9	6.5	55.0
July	2 261.7	1 738.0	3 999.7	155.4	101.6	257.1	4 256.8	6.0	55.1
August	2 270.6	1 761.8	4 032.4	157.9	106.6	264.5	4 296.9	6.2	55.6
PERSONS									
1999									
June	6 490.9	2 287.3	8 778.2	516.7	166.2	682.9	9 461.1	7.2	63.1
July	6 489.8	2 299.6	8 789.4	482.4	177.0	659.3	9 448.7	7.0	63.0
August	6 518.7	2 302.1	8 820.8	497.4	180.1	677.4	9 498.2	7.1	63.2
September	6 524.0	2 305.0	8 829.0	514.5	179.2	693.7	9 522.7	7.3	63.3
October	6 552.9	2 318.9	8 871.8	508.9	166.8	675.8	9 547.6	7.1	63.4
November	6 559.1	2 313.6	8 872.8	488.5	157.4	645.9	9 518.7	6.8	63.1
December	6 591.8	2 320.5	8 912.3	509.1	163.2	672.3	9 584.7	7.0	63.5
2000									
January	6 571.0	2 332.3	8 903.4	492.5	162.3	654.8	9 558.1	6.9	63.2
February	6 605.0	2 357.4	8 962.4	475.0	168.5	643.5	9 606.0	6.7	63.5
March	6 632.0	2 338.7	8 970.7	492.3	169.5	661.8	9 632.6	6.9	63.6
April	6 644.5	2 363.6	9 008.2	483.1	173.4	656.5	9 664.6	6.8	63.7
May	6 653.2	2 367.1	9 020.3	491.4	160.7	652.1	9 672.4	6.7	63.7
June	6 700.3	2 341.7	9 042.0	463.1	179.9	643.0	9 685.1	6.6	63.7
July	6 716.2	2 401.6	9 117.8	440.5	169.2	609.7	9 727.5	6.3	63.9
August	6 720.5	2 421.3	9 141.8	457.3	166.4	623.7	9 765.5	6.4	64.1

LABOUR FORCE STATUS (AGED 15 AND OVER): Trend(a)

Month	EMPLOYED.....			UNEMPLOYED.....			Labour force '000	Unemp- loyment rate %	Partic- ipation rate %
	Full time '000	Part time '000	Total '000	Looking for f/t work '000	Looking for p/t work '000	Total '000			
MALES									
1999									
June	4 338.3	629.7	4 968.1	327.7	64.2	391.9	5 360.0	7.3	72.7
July	4 349.3	626.1	4 975.5	324.4	64.9	389.3	5 364.8	7.3	72.6
August	4 360.2	621.4	4 981.6	322.4	65.0	387.4	5 369.0	7.2	72.6
September	4 369.3	617.5	4 986.7	321.4	64.4	385.8	5 372.5	7.2	72.5
October	4 375.5	615.8	4 991.3	320.8	63.2	384.0	5 375.3	7.1	72.5
November	4 379.5	617.6	4 997.1	319.7	61.9	381.6	5 378.8	7.1	72.4
December	4 383.5	623.2	5 006.8	317.0	60.9	377.9	5 384.7	7.0	72.4
2000									
January	4 389.6	630.5	5 020.1	313.2	60.5	373.6	5 393.7	6.9	72.4
February	4 398.7	637.0	5 035.7	308.9	61.0	369.9	5 405.6	6.8	72.5
March	4 410.0	641.9	5 051.9	305.3	62.0	367.2	5 419.1	6.8	72.6
April	4 421.8	645.1	5 066.8	302.3	62.7	365.0	5 431.9	6.7	72.7
May	4 432.9	647.2	5 080.1	299.8	63.1	362.9	5 443.0	6.7	72.7
June	4 442.6	649.4	5 092.0	297.8	63.2	361.0	5 453.0	6.6	72.8
July	4 450.7	651.9	5 102.6	296.2	63.3	359.5	5 462.1	6.6	72.8
August	4 455.1	654.4	5 109.5	295.3	63.2	358.5	5 468.0	6.6	72.8
FEMALES									
1999									
June	2 137.7	1 658.5	3 796.2	181.3	111.9	293.2	4 089.4	7.2	53.8
July	2 143.9	1 669.4	3 813.3	180.3	111.2	291.5	4 104.8	7.1	53.9
August	2 152.2	1 680.2	3 832.4	180.2	109.7	289.9	4 122.3	7.0	54.1
September	2 161.6	1 689.7	3 851.3	180.4	107.7	288.0	4 139.3	7.0	54.2
October	2 171.6	1 696.9	3 868.5	180.6	105.5	286.1	4 154.6	6.9	54.4
November	2 182.2	1 701.2	3 883.4	180.4	103.8	284.1	4 167.5	6.8	54.5
December	2 192.2	1 703.2	3 895.4	180.3	102.9	283.3	4 178.7	6.8	54.5
2000									
January	2 200.6	1 703.9	3 904.6	180.9	103.3	284.2	4 188.8	6.8	54.6
February	2 207.5	1 704.3	3 911.8	181.5	104.6	286.1	4 197.9	6.8	54.7
March	2 214.8	1 706.1	3 920.9	181.3	106.1	287.4	4 208.2	6.8	54.7
April	2 223.9	1 710.5	3 934.4	179.1	107.0	286.1	4 220.5	6.8	54.8
May	2 234.6	1 717.5	3 952.1	174.8	107.3	282.0	4 234.1	6.7	54.9
June	2 245.7	1 726.2	3 971.8	169.2	107.2	276.4	4 248.3	6.5	55.1
July	2 256.2	1 735.5	3 991.8	163.6	107.0	270.6	4 262.4	6.3	55.2
August	2 265.7	1 744.0	4 009.7	158.2	106.5	264.7	4 274.4	6.2	55.3
PERSONS									
1999									
June	6 476.0	2 288.2	8 764.2	509.1	176.0	685.1	9 449.3	7.3	63.1
July	6 493.3	2 295.5	8 788.8	504.7	176.1	680.8	9 469.6	7.2	63.1
August	6 512.4	2 301.6	8 814.0	502.6	174.6	677.3	9 491.2	7.1	63.2
September	6 530.9	2 307.2	8 838.0	501.8	172.0	673.8	9 511.9	7.1	63.2
October	6 547.1	2 312.7	8 859.8	501.4	168.7	670.1	9 529.9	7.0	63.3
November	6 561.7	2 318.8	8 880.5	500.1	165.7	665.8	9 546.3	7.0	63.3
December	6 575.7	2 326.5	8 902.2	497.3	163.8	661.2	9 563.4	6.9	63.3
2000									
January	6 590.3	2 334.4	8 924.7	494.0	163.8	657.8	9 582.5	6.9	63.4
February	6 606.2	2 341.3	8 947.5	490.4	165.6	656.0	9 603.5	6.8	63.4
March	6 624.8	2 348.0	8 972.8	486.6	168.0	654.6	9 627.3	6.8	63.5
April	6 645.7	2 355.6	9 001.3	481.4	169.7	651.1	9 652.4	6.7	63.6
May	6 667.5	2 364.7	9 032.2	474.6	170.3	644.9	9 677.1	6.7	63.7
June	6 688.3	2 375.6	9 063.8	467.0	170.4	637.5	9 701.3	6.6	63.8
July	6 707.0	2 387.4	9 094.4	459.8	170.3	630.1	9 724.4	6.5	63.9
August	6 720.8	2 398.4	9 119.2	453.5	169.7	623.2	9 742.5	6.4	63.9

(a) Trend estimates for February 2000 to July 2000 have been revised.

UNEMPLOYED PERSONS: Original

Month	NUMBER OF UNEMPLOYED PERSONS.....					UNEMPLOYMENT RATE.....					UNEMPLOYMENT TO POPULATION RATIO	
	Aged 15-19 looking for f/t work	Aged 20 and over looking for f/t work	Total looking for f/t work	Looking for p/t work	Total	Aged 15-19 looking for f/t work	Aged 20 and over looking for f/t work	Total looking for f/t work	Looking for p/t work	Total	Aged 15-19 looking for f/t work	Aged 20 and over looking for f/t work
	'000	'000	'000	'000	'000	%	%	%	%	%	%	%
MALES												
1999												
June	39.1	282.9	321.9	49.8	371.7	22.1	6.3	6.9	7.0	6.9	5.7	4.2
July	32.8	269.4	302.2	57.2	359.4	17.3	6.0	6.5	8.5	6.7	4.8	4.0
August	32.2	284.2	316.4	66.4	382.9	18.3	6.4	6.8	9.7	7.2	4.7	4.2
September	35.1	296.2	331.3	72.5	403.8	18.7	6.5	7.0	10.4	7.5	5.1	4.4
October	33.8	273.4	307.2	61.4	368.6	18.5	6.1	6.6	9.0	6.9	4.9	4.1
November	38.6	262.7	301.3	48.9	350.3	21.1	5.8	6.4	7.4	6.6	5.6	3.9
December	50.1	271.9	322.0	65.7	387.7	23.2	6.0	6.7	9.6	7.1	7.3	4.0
2000												
January	51.0	293.6	344.6	62.5	407.1	23.4	6.5	7.3	9.3	7.6	7.4	4.3
February	45.8	280.7	326.5	66.1	392.6	22.4	6.2	6.9	9.7	7.2	6.7	4.1
March	38.9	271.9	310.9	71.3	382.2	21.3	6.0	6.6	10.0	7.1	5.7	4.0
April	35.7	260.7	296.3	68.5	364.9	19.0	5.8	6.3	9.3	6.7	5.2	3.8
May	33.9	264.0	297.8	58.7	356.5	18.8	5.8	6.3	8.2	6.6	4.9	3.9
June	32.4	260.8	293.2	55.1	348.3	17.7	5.7	6.2	7.8	6.4	4.7	3.8
July	32.3	245.1	277.3	60.0	337.3	16.8	5.4	5.8	8.4	6.2	4.7	3.6
August	30.8	264.6	295.4	57.1	352.5	18.4	5.8	6.3	8.0	6.5	4.5	3.9
FEMALES												
1999												
June	26.2	149.6	175.8	100.9	276.7	24.6	6.8	7.6	5.7	6.8	4.0	2.2
July	25.6	134.8	160.4	104.2	264.6	22.3	6.1	6.9	5.9	6.5	3.9	1.9
August	26.4	140.4	166.8	103.1	269.9	25.4	6.5	7.3	5.8	6.7	4.1	2.0
September	28.7	159.0	187.7	121.8	309.5	26.1	7.1	8.0	6.6	7.4	4.4	2.3
October	26.7	147.2	173.9	100.4	274.4	24.1	6.5	7.4	5.6	6.6	4.1	2.1
November	29.2	138.3	167.5	92.1	259.6	25.7	6.2	7.1	5.1	6.2	4.5	2.0
December	37.8	146.9	184.7	94.8	279.5	27.7	6.4	7.5	5.3	6.6	5.8	2.1
2000												
January	32.7	155.8	188.5	100.7	289.2	24.3	6.9	7.9	6.0	7.1	5.0	2.2
February	31.8	169.1	200.8	125.2	326.1	25.1	7.5	8.4	6.9	7.8	4.8	2.4
March	27.8	169.6	197.4	120.6	318.0	24.7	7.4	8.2	6.6	7.5	4.2	2.4
April	28.6	153.3	181.8	112.6	294.4	25.1	6.7	7.6	6.1	7.0	4.3	2.2
May	31.8	154.2	186.0	100.4	286.4	27.3	6.8	7.8	5.4	6.8	4.8	2.2
June	26.0	126.5	152.5	107.7	260.3	23.7	5.6	6.4	5.8	6.2	3.9	1.8
July	25.3	119.7	145.0	94.2	239.2	21.4	5.2	5.9	5.2	5.6	3.8	1.7
August	23.8	125.2	149.0	99.8	248.8	21.6	5.5	6.3	5.4	5.9	3.6	1.8
PERSONS												
1999												
June	65.3	432.5	497.8	150.7	648.5	23.0	6.5	7.2	6.0	6.9	4.9	3.2
July	58.4	404.2	462.6	161.4	624.0	19.2	6.0	6.6	6.6	6.6	4.4	3.0
August	58.7	424.6	483.2	169.6	652.8	20.9	6.4	7.0	6.9	7.0	4.4	3.1
September	63.8	455.2	519.0	194.3	713.3	21.4	6.7	7.3	7.6	7.4	4.8	3.3
October	60.5	420.6	481.1	161.9	643.0	20.6	6.2	6.8	6.5	6.7	4.5	3.1
November	67.8	401.0	468.8	141.1	609.9	22.9	6.0	6.7	5.7	6.4	5.1	2.9
December	87.9	418.8	506.7	160.5	667.2	25.0	6.1	7.0	6.5	6.9	6.6	3.0
2000												
January	83.8	449.4	533.2	163.2	696.3	23.7	6.7	7.5	6.9	7.4	6.2	3.3
February	77.6	449.7	527.3	191.4	718.7	23.4	6.6	7.4	7.7	7.5	5.8	3.3
March	66.8	441.5	508.3	191.8	700.2	22.6	6.5	7.2	7.5	7.3	5.0	3.2
April	64.3	413.9	478.2	181.1	659.3	21.3	6.1	6.7	7.0	6.8	4.8	3.0
May	65.7	418.2	483.9	159.1	643.0	22.2	6.2	6.8	6.2	6.7	4.9	3.0
June	58.4	387.3	445.7	162.9	608.6	20.0	5.7	6.3	6.4	6.3	4.3	2.8
July	57.6	364.8	422.4	154.2	576.5	18.6	5.3	5.9	6.1	5.9	4.3	2.6
August	54.6	389.8	444.4	156.9	601.3	19.7	5.7	6.3	6.1	6.2	4.0	2.8

UNEMPLOYED PERSONS: Seasonally adjusted

Month	NUMBER OF UNEMPLOYED PERSONS....					UNEMPLOYMENT RATE.....					UNEMPLOYMENT TO POPULATION RATIO	
	Aged 15-19 looking for f/t work '000	Aged 20 and over looking for f/t work '000	Total looking for f/t work '000	Looking for p/t work '000	Total '000	Aged 15-19 looking for f/t work %	Aged 20 and over looking for f/t work %	Total looking for f/t work %	Looking for p/t work %	Total %	Aged 15-19 looking for f/t work %	Aged 20 and over looking for f/t work %
MALES												
1999												
June	39.9	292.6	332.5	56.7	389.2	21.2	6.5	7.1	8.2	7.3	5.9	4.4
July	36.0	274.9	310.8	64.4	375.2	19.0	6.1	6.7	9.3	7.0	5.3	4.1
August	36.1	284.5	320.6	69.8	390.5	19.0	6.3	6.8	10.1	7.3	5.3	4.2
September	38.1	287.8	325.9	66.3	392.2	19.6	6.4	6.9	9.8	7.3	5.6	4.3
October	38.2	288.5	326.7	64.2	390.9	20.1	6.4	7.0	9.4	7.3	5.6	4.3
November	41.8	268.4	310.2	55.9	366.0	21.5	6.0	6.6	8.4	6.8	6.1	4.0
December	42.0	284.4	326.4	62.6	388.9	21.7	6.3	6.9	9.2	7.2	6.1	4.2
2000												
January	42.0	275.2	317.2	60.2	377.4	21.6	6.1	6.8	8.6	7.0	6.1	4.1
February	42.2	257.6	299.8	60.3	360.1	21.8	5.7	6.4	8.6	6.6	6.1	3.8
March	38.2	265.9	304.1	62.2	366.3	21.0	5.9	6.5	8.9	6.8	5.6	3.9
April	36.2	266.1	302.3	65.9	368.3	19.3	5.9	6.4	9.1	6.8	5.3	3.9
May	34.3	268.5	302.8	59.8	362.7	18.4	5.9	6.4	8.4	6.7	5.0	4.0
June	33.1	269.8	302.9	62.9	365.8	17.0	5.9	6.4	9.1	6.7	4.8	4.0
July	35.4	249.7	285.1	67.6	352.7	18.4	5.5	6.0	9.2	6.4	5.1	3.7
August	34.5	264.8	299.3	59.8	359.1	19.2	5.8	6.3	8.3	6.6	5.0	3.9
FEMALES												
1999												
June	30.1	154.1	184.2	109.5	293.7	25.9	6.9	7.9	6.2	7.2	4.6	2.2
July	30.4	141.2	171.5	112.6	284.1	26.2	6.4	7.4	6.3	6.9	4.7	2.0
August	30.1	146.6	176.7	110.3	287.0	26.2	6.6	7.6	6.1	7.0	4.6	2.1
September	31.8	156.8	188.7	112.9	301.6	27.4	7.1	8.1	6.3	7.3	4.9	2.2
October	30.3	152.0	182.2	102.6	284.8	26.1	6.8	7.7	5.7	6.8	4.6	2.2
November	30.3	148.1	178.4	101.5	279.9	25.4	6.6	7.6	5.6	6.7	4.6	2.1
December	30.1	152.6	182.8	100.7	283.4	25.4	6.7	7.7	5.6	6.8	4.6	2.2
2000												
January	26.6	148.7	175.3	102.1	277.4	23.3	6.6	7.4	5.7	6.6	4.1	2.1
February	27.3	147.9	175.2	108.2	283.4	23.3	6.6	7.4	5.9	6.8	4.2	2.1
March	27.1	161.1	188.2	107.3	295.5	23.5	7.0	7.8	5.9	7.0	4.1	2.3
April	29.0	151.7	180.7	107.5	288.2	25.0	6.6	7.5	5.9	6.8	4.4	2.2
May	32.0	156.6	188.5	100.9	289.4	26.1	6.8	7.8	5.5	6.8	4.9	2.2
June	29.9	130.3	160.2	117.0	277.2	25.0	5.7	6.7	6.4	6.5	4.5	1.8
July	30.0	125.4	155.4	101.6	257.1	25.2	5.5	6.4	5.5	6.0	4.6	1.8
August	27.2	130.7	157.9	106.6	264.5	22.4	5.7	6.5	5.7	6.2	4.1	1.8
PERSONS												
1999												
June	70.0	446.7	516.7	166.2	682.9	23.0	6.7	7.4	6.8	7.2	5.3	3.3
July	66.3	416.0	482.4	177.0	659.3	21.7	6.2	6.9	7.1	7.0	5.0	3.0
August	66.3	431.1	497.4	180.1	677.4	21.7	6.4	7.1	7.3	7.1	5.0	3.1
September	69.9	444.7	514.5	179.2	693.7	22.5	6.6	7.3	7.2	7.3	5.2	3.2
October	68.5	440.4	508.9	166.8	675.8	22.4	6.5	7.2	6.7	7.1	5.1	3.2
November	72.1	416.5	488.5	157.4	645.9	23.0	6.2	6.9	6.4	6.8	5.4	3.0
December	72.1	437.0	509.1	163.2	672.3	23.1	6.4	7.2	6.6	7.0	5.4	3.2
2000												
January	68.5	424.0	492.5	162.3	654.8	22.2	6.3	7.0	6.5	6.9	5.1	3.1
February	69.5	405.5	475.0	168.5	643.5	22.4	6.0	6.7	6.7	6.7	5.2	2.9
March	65.3	427.0	492.3	169.5	661.8	22.0	6.3	6.9	6.8	6.9	4.9	3.1
April	65.3	417.8	483.1	173.4	656.5	21.5	6.1	6.8	6.8	6.8	4.8	3.0
May	66.3	425.1	491.4	160.7	652.1	21.4	6.2	6.9	6.4	6.7	4.9	3.1
June	63.0	400.1	463.1	179.9	643.0	20.0	5.8	6.5	7.1	6.6	4.7	2.9
July	65.4	375.1	440.5	169.2	609.7	21.0	5.5	6.2	6.6	6.3	4.8	2.7
August	61.8	395.5	457.3	166.4	623.7	20.5	5.8	6.4	6.4	6.4	4.6	2.8

UNEMPLOYED PERSONS: Trend(a)

Month	NUMBER OF UNEMPLOYED PERSONS.....					UNEMPLOYMENT RATE.....					UNEMPLOYMENT TO POPULATION RATIO	
	Aged 15-19 looking for f/t work	Aged 20 and over looking for f/t work	Total looking for f/t work	Looking for p/t work	Total	Aged 15-19 looking for f/t work	Aged 20 and over looking for f/t work	Total looking for f/t work	Looking for p/t work	Total	Aged 15-19 looking for f/t work	Aged 20 and over looking for f/t work
	'000	'000	'000	'000	'000	%	%	%	%	%	%	%
MALES												
1999												
June	38.2	289.5	327.7	64.2	391.9	20.3	6.5	7.0	9.2	7.3	5.6	4.3
July	37.5	286.9	324.4	64.9	389.3	19.8	6.4	6.9	9.4	7.3	5.5	4.3
August	37.4	285.1	322.4	65.0	387.4	19.6	6.3	6.9	9.5	7.2	5.5	4.2
September	38.0	283.4	321.4	64.4	385.8	19.8	6.3	6.9	9.4	7.2	5.6	4.2
October	39.3	281.6	320.8	63.2	384.0	20.4	6.3	6.8	9.3	7.1	5.7	4.2
November	40.6	279.1	319.7	61.9	381.6	21.0	6.2	6.8	9.1	7.1	5.9	4.1
December	41.5	275.5	317.0	60.9	377.9	21.5	6.1	6.7	8.9	7.0	6.1	4.1
2000												
January	41.5	271.7	313.2	60.5	373.6	21.6	6.0	6.7	8.8	6.9	6.0	4.0
February	40.4	268.5	308.9	61.0	369.9	21.2	5.9	6.6	8.7	6.8	5.9	4.0
March	38.7	266.6	305.3	62.0	367.2	20.4	5.9	6.5	8.8	6.8	5.6	3.9
April	36.9	265.4	302.3	62.7	365.0	19.6	5.9	6.4	8.9	6.7	5.4	3.9
May	35.5	264.3	299.8	63.1	362.9	18.8	5.8	6.3	8.9	6.7	5.2	3.9
June	34.5	263.2	297.8	63.2	361.0	18.3	5.8	6.3	8.9	6.6	5.0	3.9
July	33.9	262.3	296.2	63.3	359.5	18.0	5.8	6.2	8.9	6.6	4.9	3.9
August	33.6	261.8	295.3	63.2	358.5	17.9	5.7	6.2	8.8	6.6	4.9	3.8
FEMALES												
1999												
June	30.6	150.7	181.3	111.9	293.2	26.5	6.8	7.8	6.3	7.2	4.7	2.2
July	30.8	149.5	180.3	111.2	291.5	26.5	6.8	7.8	6.2	7.1	4.7	2.1
August	30.9	149.3	180.2	109.7	289.9	26.5	6.7	7.7	6.1	7.0	4.7	2.1
September	30.8	149.6	180.4	107.7	288.0	26.4	6.7	7.7	6.0	7.0	4.7	2.1
October	30.4	150.2	180.6	105.5	286.1	26.0	6.7	7.7	5.9	6.9	4.7	2.1
November	29.7	150.7	180.4	103.8	284.1	25.4	6.7	7.6	5.7	6.8	4.5	2.2
December	28.9	151.5	180.3	102.9	283.3	24.7	6.7	7.6	5.7	6.8	4.4	2.2
2000												
January	28.2	152.7	180.9	103.3	284.2	24.2	6.7	7.6	5.7	6.8	4.3	2.2
February	28.0	153.5	181.5	104.6	286.1	24.0	6.8	7.6	5.8	6.8	4.3	2.2
March	28.4	152.9	181.3	106.1	287.4	24.2	6.7	7.6	5.9	6.8	4.3	2.2
April	29.0	150.1	179.1	107.0	286.1	24.6	6.6	7.5	5.9	6.8	4.4	2.1
May	29.5	145.3	174.8	107.3	282.0	24.8	6.3	7.3	5.9	6.7	4.5	2.1
June	29.7	139.5	169.2	107.2	276.4	24.8	6.1	7.0	5.8	6.5	4.5	2.0
July	29.7	133.9	163.6	107.0	270.6	24.6	5.8	6.8	5.8	6.3	4.5	1.9
August	29.5	128.7	158.2	106.5	264.7	24.3	5.6	6.5	5.8	6.2	4.5	1.8
PERSONS												
1999												
June	68.8	440.2	509.1	176.0	685.1	22.7	6.6	7.3	7.1	7.3	5.2	3.2
July	68.3	436.4	504.7	176.1	680.8	22.4	6.5	7.2	7.1	7.2	5.1	3.2
August	68.2	434.4	502.6	174.6	677.3	22.3	6.5	7.2	7.1	7.1	5.1	3.2
September	68.8	433.0	501.8	172.0	673.8	22.3	6.4	7.1	6.9	7.1	5.2	3.2
October	69.7	431.8	501.4	168.7	670.1	22.5	6.4	7.1	6.8	7.0	5.2	3.1
November	70.3	429.8	500.1	165.7	665.8	22.7	6.4	7.1	6.7	7.0	5.3	3.1
December	70.4	427.0	497.3	163.8	661.2	22.7	6.3	7.0	6.6	6.9	5.3	3.1
2000												
January	69.7	424.4	494.0	163.8	657.8	22.6	6.3	7.0	6.6	6.9	5.2	3.1
February	68.4	422.0	490.4	165.6	656.0	22.3	6.2	6.9	6.6	6.8	5.1	3.1
March	67.1	419.5	486.6	168.0	654.6	21.9	6.2	6.8	6.7	6.8	5.0	3.0
April	65.9	415.5	481.4	169.7	651.1	21.5	6.1	6.8	6.7	6.7	4.9	3.0
May	65.0	409.5	474.6	170.3	644.9	21.1	6.0	6.6	6.7	6.7	4.8	3.0
June	64.3	402.8	467.0	170.4	637.5	20.9	5.9	6.5	6.7	6.6	4.8	2.9
July	63.6	396.1	459.8	170.3	630.1	20.6	5.8	6.4	6.7	6.5	4.7	2.9
August	63.0	390.5	453.5	169.7	623.2	20.4	5.7	6.3	6.6	6.4	4.7	2.8

(a) Trend estimates for February 2000 to July 2000 have been revised.

PERSONS AGED 15 TO 19, Education and Labour Force: **Original**—August 2000

	EMPLOYED.....			UNEMPLOYED.....			Labour force	Not in labour force	Civilian population aged 15-19	Unemployment rate	Participation rate
	Full time	Part time	Total	Looking for f/t work	Looking for p/t work	Total					
	'000	'000	'000	'000	'000	'000	'000	'000	'000	%	%
ATTENDING NEITHER SCHOOL NOR A TERTIARY EDUCATIONAL INSTITUTION FULL TIME											
Males	135.2	42.0	177.2	26.9	* 2.4	29.3	206.5	25.4	231.9	14.2	89.1
Females	83.8	39.8	123.6	19.4	* 1.5	20.9	144.5	25.0	169.5	14.5	85.3
Persons	219.0	81.8	300.8	46.3	* 3.9	50.2	351.1	50.3	401.4	14.3	87.5
ATTENDING A TERTIARY EDUCATIONAL INSTITUTION FULL TIME											
Males	* 0.4	41.2	41.6	* 2.2	* 4.3	6.5	48.1	47.1	95.2	13.5	50.6
Females	* 2.5	66.2	68.8	* 1.9	10.7	12.6	81.4	38.8	120.1	15.5	67.7
Persons	* 3.0	107.5	110.4	* 4.1	15.0	19.1	129.5	85.8	215.3	14.7	60.1
ATTENDING SCHOOL											
Males	* 0.6	94.1	94.7	* 1.7	25.8	27.5	122.2	241.5	363.7	22.5	33.6
Females	* 0.0	134.0	134.0	* 2.5	24.4	26.9	160.9	208.9	369.8	16.7	43.5
Persons	* 0.6	228.1	228.7	* 4.2	50.2	54.4	283.1	450.4	733.5	19.2	38.6
TOTAL											
Males	136.2	177.3	313.5	30.8	32.5	63.3	376.9	313.9	690.8	16.8	54.6
Females	86.4	240.1	326.4	23.8	36.6	60.4	386.8	272.6	659.4	15.6	58.7
Persons	222.6	417.4	640.0	54.6	69.1	123.7	763.7	586.5	1 350.2	16.2	56.6

LABOUR FORCE STATUS (AGED 15 & OVER), States & Territories: **Original**—August 2000

	EMPLOYED.....			UNEMPLOYED.....			Labour force	Not in labour force	Civilian population aged 15 and over	Unemp-loyment rate	Partic-ipation rate
	Full time	Part time	Total	Looking for f/t work	Looking for p/t work	Total					
	'000	'000	'000	'000	'000	'000					
MALES											
New South Wales	1 492.5	209.2	1 701.7	87.1	14.0	101.2	1 802.8	737.7	2 540.5	5.6	71.0
Victoria	1 092.4	173.5	1 265.9	66.1	18.3	84.5	1 350.4	521.2	1 871.5	6.3	72.2
Queensland	819.4	118.3	937.7	67.0	10.0	77.0	1 014.6	377.5	1 392.2	7.6	72.9
South Australia	327.7	54.5	382.2	26.6	5.3	31.9	414.1	176.2	590.4	7.7	70.1
Western Australia	454.9	68.7	523.6	31.2	6.7	38.0	561.5	183.2	744.7	6.8	75.4
Tasmania	92.5	16.6	109.2	11.9	1.4	13.3	122.5	58.0	180.6	10.9	67.9
Northern Territory	43.9	6.4	50.3	1.9	* 0.6	2.6	52.9	20.6	73.5	4.8	72.0
Australian Capital Territory	75.7	13.8	89.5	3.5	* 0.7	4.2	93.7	25.2	118.9	4.5	78.8
Australia	4 399.1	660.9	5 060.0	295.4	57.1	352.5	5 412.5	2 099.7	7 512.2	6.5	72.0
FEMALES											
New South Wales	787.2	542.3	1 329.4	40.1	32.2	72.3	1 401.7	1 217.6	2 619.3	5.2	53.5
Victoria	550.1	451.2	1 001.3	39.7	22.0	61.6	1 063.0	887.3	1 950.3	5.8	54.5
Queensland	406.9	339.4	746.3	35.0	22.3	57.3	803.6	615.4	1 419.0	7.1	56.6
South Australia	158.2	138.4	296.6	14.7	8.2	22.9	319.5	296.2	615.8	7.2	51.9
Western Australia	210.0	195.8	405.8	11.3	10.6	21.9	427.7	317.7	745.5	5.1	57.4
Tasmania	42.8	44.7	87.5	5.8	2.7	8.4	95.9	94.6	190.5	8.8	50.4
Northern Territory	26.5	12.6	39.1	* 0.9	* 0.5	1.4	40.5	26.6	67.1	3.4	60.3
Australian Capital Territory	51.3	31.1	82.3	1.6	1.3	2.9	85.3	38.9	124.2	3.4	68.7
Australia	2 232.9	1 755.6	3 988.4	149.0	99.8	248.8	4 237.2	3 494.4	7 731.6	5.9	54.8
PERSONS											
New South Wales	2 279.7	751.4	3 031.1	127.2	46.2	173.4	3 204.6	1 955.3	5 159.9	5.4	62.1
Victoria	1 642.4	624.7	2 267.2	105.8	40.3	146.1	2 413.3	1 408.5	3 821.8	6.1	63.1
Queensland	1 226.3	457.7	1 684.0	101.9	32.3	134.2	1 818.2	992.9	2 811.1	7.4	64.7
South Australia	485.9	192.9	678.9	41.3	13.5	54.8	733.7	472.4	1 206.1	7.5	60.8
Western Australia	664.9	264.5	929.4	42.6	17.3	59.9	989.3	500.9	1 490.2	6.1	66.4
Tasmania	135.3	61.3	196.7	17.7	4.0	21.8	218.4	152.6	371.1	10.0	58.9
Northern Territory	70.4	19.0	89.4	2.8	1.1	3.9	93.3	47.2	140.6	4.2	66.4
Australian Capital Territory	127.0	44.8	171.8	5.1	2.0	7.1	178.9	64.1	243.1	4.0	73.6
Australia	6 631.9	2 416.5	9 048.4	444.4	156.9	601.3	9 649.7	5 594.1	15 243.9	6.2	63.3

UNEMPLOYED PERSONS—New South Wales, Victoria and Queensland: **Original**

Month	NUMBER OF UNEMPLOYED PERSONS.....					UNEMPLOYMENT RATE.....					UNEMPLOYMENT TO POPULATION RATIO	
	Aged 15-19 looking for f/t work	Aged 20 and over looking for f/t work	Total looking for f/t work	Looking for p/t work	Total	Aged 15-19 looking for f/t work	Aged 20 and over looking for f/t work	Total looking for f/t work	Looking for p/t work	Total	Aged 15-19 looking for f/t work	Aged 20 and over looking for f/t work
	'000	'000	'000	'000	'000	%	%	%	%	%	%	%
NEW SOUTH WALES												
1999												
June	15.8	128.1	143.9	45.7	189.6	18.1	5.7	6.1	5.9	6.1	3.6	2.8
July	14.6	121.8	136.4	41.4	177.8	14.4	5.3	5.7	5.5	5.7	3.3	2.6
August	16.8	134.0	150.8	51.2	202.0	19.5	5.9	6.4	6.7	6.5	3.8	2.9
September	18.9	140.0	158.9	63.5	222.4	19.8	6.0	6.6	8.0	6.9	4.3	3.0
October	15.3	123.3	138.6	44.0	182.6	15.9	5.3	5.8	5.9	5.8	3.5	2.6
November	18.6	113.4	131.9	35.0	167.0	20.7	4.9	5.5	4.7	5.3	4.2	2.4
December	29.4	120.5	149.9	47.1	197.0	26.0	5.1	6.1	6.3	6.1	6.6	2.6
2000												
January	24.9	135.2	160.1	40.5	200.6	21.4	5.8	6.6	5.8	6.4	5.6	2.9
February	22.9	129.9	152.8	59.2	212.0	20.8	5.6	6.3	7.6	6.6	5.2	2.8
March	18.6	131.8	150.4	56.0	206.5	19.5	5.7	6.2	7.0	6.4	4.2	2.8
April	15.4	118.5	133.9	49.0	182.9	15.5	5.1	5.5	6.2	5.7	3.5	2.5
May	17.4	115.4	132.8	49.1	181.9	18.2	5.0	5.5	6.1	5.6	3.9	2.5
June	19.3	106.7	126.0	50.6	176.6	19.5	4.6	5.2	6.4	5.5	4.3	2.3
July	17.4	99.9	117.4	43.1	160.5	16.7	4.2	4.8	5.5	5.0	3.9	2.1
August	19.3	107.9	127.2	46.2	173.4	20.5	4.7	5.3	5.8	5.4	4.3	2.3
VICTORIA												
1999												
June	13.5	118.4	131.9	36.6	168.4	24.4	7.1	7.6	5.7	7.1	4.2	3.4
July	11.9	107.5	119.4	50.1	169.4	20.4	6.4	6.8	7.9	7.1	3.7	3.1
August	11.3	107.4	118.7	47.1	165.8	20.4	6.5	6.9	7.5	7.1	3.5	3.1
September	12.8	115.5	128.3	51.6	179.9	21.7	6.8	7.3	7.8	7.5	4.0	3.4
October	13.8	100.0	113.7	41.8	155.5	23.3	6.0	6.6	6.5	6.6	4.3	2.9
November	14.6	98.6	113.2	42.1	155.3	24.5	6.0	6.6	6.5	6.6	4.5	2.9
December	18.0	100.3	118.3	47.0	165.3	23.8	5.9	6.6	7.3	6.8	5.5	2.9
2000												
January	20.8	100.6	121.4	47.3	168.7	26.7	6.0	7.0	7.9	7.2	6.4	2.9
February	16.8	105.0	121.8	53.0	174.8	24.9	6.2	6.9	8.5	7.3	5.2	3.0
March	15.4	103.9	119.3	54.4	173.7	26.4	6.1	6.8	8.3	7.2	4.7	3.0
April	14.0	99.1	113.1	51.3	164.4	25.0	5.9	6.5	7.8	6.9	4.3	2.8
May	17.3	103.6	120.9	42.7	163.6	27.8	6.1	6.9	6.5	6.8	5.3	3.0
June	12.3	96.3	108.5	41.9	150.4	21.5	5.7	6.2	6.4	6.2	3.8	2.8
July	13.0	87.8	100.8	43.5	144.3	21.7	5.1	5.6	6.6	5.9	4.0	2.5
August	8.9	96.9	105.8	40.3	146.1	16.3	5.7	6.1	6.1	6.1	2.7	2.8
QUEENSLAND												
1999												
June	16.9	88.9	105.9	35.8	141.6	25.8	7.1	8.0	7.5	7.9	6.6	3.6
July	15.8	84.3	100.0	33.0	133.0	24.0	6.7	7.6	7.1	7.5	6.1	3.4
August	12.5	85.2	97.7	35.5	133.3	19.6	6.9	7.6	7.4	7.5	4.8	3.4
September	13.7	94.1	107.8	39.7	147.5	20.6	7.5	8.2	8.3	8.2	5.3	3.8
October	15.7	96.4	112.2	35.8	147.9	24.8	7.7	8.5	7.5	8.2	6.1	3.8
November	15.6	88.4	104.0	30.0	134.0	23.2	7.0	7.9	6.2	7.4	6.0	3.5
December	19.1	99.7	118.8	30.6	149.4	25.1	7.8	8.8	6.4	8.2	7.3	4.0
2000												
January	16.7	101.0	117.7	36.9	154.6	22.4	8.0	8.8	8.1	8.6	6.4	4.0
February	15.5	106.4	121.8	33.4	155.2	22.7	8.4	9.2	6.9	8.6	5.9	4.2
March	15.1	102.2	117.4	39.5	156.8	23.0	8.1	8.8	8.2	8.7	5.8	4.0
April	16.4	94.3	110.7	38.8	149.5	24.2	7.5	8.4	7.7	8.2	6.3	3.7
May	13.6	95.6	109.3	31.2	140.5	21.7	7.6	8.3	6.3	7.7	5.2	3.8
June	12.4	87.1	99.5	35.5	135.0	19.4	6.9	7.5	7.1	7.4	4.7	3.4
July	13.3	82.4	95.6	36.4	132.1	19.1	6.5	7.1	7.3	7.2	5.0	3.2
August	11.5	90.4	101.9	32.3	134.2	20.0	7.1	7.7	6.6	7.4	4.4	3.5

UNEMPLOYED PERSONS—South Australia, Western Australia and Tasmania: **Original**

Month	NUMBER OF UNEMPLOYED PERSONS.....					UNEMPLOYMENT RATE.....					UNEMPLOYMENT TO POPULATION RATIO	
	Aged 15-19 looking for f/t work	Aged 20 and over looking for f/t work	Total looking for f/t work	Looking for p/t work	Total	Aged 15-19 looking for f/t work	Aged 20 and over looking for f/t work	Total looking for f/t work	Looking for p/t work	Total	Aged 15-19 looking for f/t work	Aged 20 and over looking for f/t work
	'000	'000	'000	'000	'000	%	%	%	%	%	%	%
SOUTH AUSTRALIA												
1999												
June	7.4	37.2	44.6	11.5	56.0	31.9	7.6	8.7	5.5	7.8	7.3	3.4
July	5.9	34.9	40.8	13.6	54.4	24.3	7.1	7.9	6.6	7.6	5.9	3.2
August	6.8	40.8	47.6	13.4	61.0	31.0	8.3	9.3	6.5	8.5	6.8	3.7
September	5.8	39.6	45.4	15.1	60.5	26.7	8.0	8.8	7.0	8.3	5.8	3.6
October	5.9	41.7	47.6	14.9	62.4	26.8	8.5	9.2	7.0	8.6	5.8	3.8
November	7.6	37.8	45.4	10.4	55.8	32.5	7.7	8.8	4.9	7.7	7.5	3.4
December	8.3	38.1	46.4	12.8	59.2	31.4	7.5	8.7	5.9	7.9	8.2	3.5
2000												
January	7.8	41.7	49.5	12.2	61.7	31.6	8.5	9.6	5.7	8.5	7.7	3.8
February	8.8	43.7	52.5	16.1	68.6	32.5	8.6	9.8	7.8	9.3	8.6	4.0
March	7.2	38.9	46.1	13.6	59.8	30.0	7.7	8.8	6.5	8.1	7.1	3.5
April	7.3	40.5	47.8	12.7	60.6	28.3	8.1	9.1	6.0	8.2	7.2	3.7
May	6.8	43.9	50.8	12.4	63.2	29.8	8.8	9.7	5.9	8.6	6.7	4.0
June	6.0	38.3	44.3	11.6	55.9	26.0	7.6	8.4	5.8	7.7	5.8	3.5
July	4.8	36.7	41.5	12.1	53.6	20.5	7.3	7.8	5.9	7.3	4.7	3.3
August	6.0	35.2	41.3	13.5	54.8	25.1	7.0	7.8	6.6	7.5	5.9	3.2
WESTERN AUSTRALIA												
1999												
June	8.0	39.7	47.7	12.8	60.5	21.5	6.0	6.9	4.8	6.3	5.8	3.0
July	7.5	35.6	43.1	15.1	58.2	19.3	5.4	6.2	5.7	6.0	5.5	2.7
August	7.7	36.9	44.6	15.1	59.7	20.7	5.6	6.4	5.7	6.2	5.7	2.8
September	8.5	44.8	53.2	15.9	69.1	21.9	6.6	7.5	5.8	7.0	6.2	3.4
October	6.7	38.4	45.1	16.4	61.5	18.2	5.7	6.3	6.1	6.3	4.9	2.9
November	7.6	41.9	49.5	14.3	63.8	18.7	6.1	6.9	5.3	6.4	5.5	3.1
December	8.2	38.3	46.5	15.0	61.5	19.2	5.6	6.4	5.6	6.2	6.0	2.9
2000												
January	8.5	47.6	56.1	18.1	74.2	19.8	7.0	7.8	6.8	7.5	6.2	3.6
February	8.7	43.6	52.3	19.2	71.6	21.3	6.4	7.2	7.1	7.2	6.3	3.3
March	6.9	43.9	50.8	18.3	69.1	19.3	6.5	7.1	6.6	7.0	5.0	3.3
April	7.9	40.6	48.4	19.5	68.0	22.1	6.0	6.8	7.1	6.8	5.7	3.0
May	6.0	38.4	44.5	15.1	59.6	17.5	5.7	6.3	5.5	6.1	4.3	2.9
June	4.6	36.7	41.2	15.4	56.7	14.2	5.5	5.9	5.5	5.8	3.3	2.7
July	4.9	39.1	43.9	11.9	55.8	13.0	5.7	6.1	4.5	5.7	3.5	2.9
August	4.9	37.7	42.6	17.3	59.9	15.3	5.6	6.0	6.1	6.1	3.5	2.8
TASMANIA												
1999												
June	2.6	13.6	16.2	4.1	20.3	30.1	9.5	10.6	6.4	9.4	7.5	4.1
July	1.9	13.1	15.0	3.7	18.7	24.9	9.1	9.8	6.0	8.7	5.4	3.9
August	1.9	13.7	15.6	2.7	18.3	24.2	9.3	10.0	4.7	8.6	5.6	4.1
September	2.5	13.6	16.1	4.1	20.2	30.1	9.1	10.2	7.0	9.3	7.2	4.1
October	1.9	13.5	15.4	4.9	20.3	21.9	9.2	9.9	8.1	9.4	5.3	4.0
November	2.0	13.9	15.9	5.1	21.0	24.7	9.4	10.2	8.3	9.6	5.9	4.1
December	3.2	13.3	16.4	4.6	21.0	32.1	9.0	10.4	7.0	9.4	9.1	4.0
2000												
January	2.8	13.8	16.6	4.3	20.8	31.2	9.4	10.6	6.8	9.5	8.0	4.1
February	3.1	12.0	15.1	5.1	20.2	32.8	8.3	9.7	8.1	9.3	8.9	3.6
March	2.4	12.6	14.9	5.1	20.0	26.9	8.7	9.7	7.7	9.1	6.8	3.7
April	2.4	12.1	14.6	5.3	19.8	29.5	8.3	9.5	8.1	9.1	7.0	3.6
May	3.2	12.2	15.4	3.9	19.4	32.4	8.4	9.9	6.1	8.8	9.3	3.6
June	2.8	13.6	16.4	3.9	20.2	29.2	9.2	10.5	6.1	9.2	8.1	4.0
July	3.0	11.5	14.5	3.9	18.4	35.1	8.1	9.6	5.9	8.5	8.7	3.4
August	3.0	14.7	17.7	4.0	21.8	34.4	10.2	11.6	6.2	10.0	8.7	4.4

UNEMPLOYED PERSONS—Northern Territory and Australian Capital Territory: **Original**

Month	NUMBER OF UNEMPLOYED PERSONS.....					UNEMPLOYMENT RATE.....					UNEMPLOYMENT TO POPULATION RATIO	
	Aged 15-19 looking for f/t work	Aged 20 and over looking for f/t work	Total looking for f/t work	Looking for p/t work	Total	Aged 15-19 looking for f/t work	Aged 20 and over looking for f/t work	Total looking for f/t work	Looking for p/t work	Total	Aged 15-19 looking for f/t work	Aged 20 and over looking for f/t work
	'000	'000	'000	'000	'000	%	%	%	%	%	%	%
NORTHERN TERRITORY												
1999												
June	* 0.5	2.2	2.7	1.0	3.7	* 15.2	3.1	3.7	4.4	3.8	* 3.5	1.8
July	* 0.3	2.1	2.4	1.4	3.8	* 8.0	3.1	3.3	6.7	4.0	* 2.0	1.7
August	* 0.6	1.5	2.1	1.0	3.1	* 15.5	2.1	2.7	4.2	3.1	* 3.9	1.2
September	* 0.4	2.8	3.2	* 0.9	4.1	* 9.6	3.7	4.0	* 4.2	4.0	* 2.7	2.2
October	* 0.6	2.2	2.8	* 0.7	3.5	* 15.2	3.0	3.6	* 3.5	3.6	* 3.9	1.8
November	1.0	1.3	2.3	* 0.9	3.3	21.8	1.9	3.1	* 4.5	3.4	6.8	1.1
December	* 0.7	3.0	3.7	1.0	4.7	* 19.0	4.0	4.7	5.3	4.9	* 5.1	2.4
2000												
January	1.0	3.1	4.0	1.2	5.3	30.5	4.5	5.6	6.1	5.7	6.7	2.5
February	* 0.5	3.9	4.4	1.6	6.0	* 17.0	5.4	5.8	9.2	6.4	* 3.3	3.1
March	* 0.3	2.9	3.2	* 0.8	4.0	* 9.0	3.8	4.0	* 4.2	4.1	* 2.1	2.3
April	* 0.3	3.4	3.7	1.2	5.0	* 9.3	4.7	4.9	6.3	5.2	* 2.3	2.7
May	* 0.3	3.6	3.9	1.2	5.1	* 9.1	5.1	5.2	6.2	5.4	* 2.0	2.8
June	* 0.4	3.7	4.1	* 0.7	4.8	* 12.1	5.1	5.4	* 3.5	5.0	* 2.8	2.9
July	* 0.6	3.1	3.6	* 0.9	4.6	* 14.6	4.4	4.9	* 4.6	4.8	* 3.8	2.5
August	* 0.3	2.5	2.8	1.1	3.9	* 9.5	3.6	3.9	5.6	4.2	* 2.1	2.0
AUSTRALIAN CAPITAL TERRITORY												
1999												
June	* 0.6	4.3	4.9	3.3	8.3	* 22.9	3.6	4.1	7.0	4.9	* 2.7	2.0
July	* 0.6	4.9	5.5	3.2	8.7	* 13.5	4.1	4.4	7.2	5.1	* 2.6	2.3
August	* 1.0	5.1	6.1	3.6	9.7	* 25.5	4.2	4.9	8.0	5.7	* 4.3	2.4
September	1.2	4.8	6.1	3.4	9.5	31.3	4.0	4.8	7.1	5.5	5.3	2.3
October	* 0.7	5.1	5.8	3.5	9.3	* 18.1	4.1	4.5	7.5	5.3	* 3.0	2.4
November	* 0.9	5.7	6.6	3.2	9.8	* 24.0	4.6	5.1	7.0	5.6	* 3.9	2.6
December	* 0.9	5.7	6.6	2.4	9.0	* 23.9	4.5	5.1	5.4	5.2	* 3.9	2.6
2000												
January	1.3	6.4	7.7	2.8	10.5	27.3	5.1	5.9	6.5	6.1	5.5	3.0
February	1.3	5.3	6.6	3.7	10.3	25.8	4.1	5.0	8.7	5.9	5.5	2.5
March	* 0.9	5.4	6.3	4.0	10.3	* 20.5	4.2	4.7	9.7	5.9	* 3.8	2.5
April	* 0.5	5.4	5.9	3.2	9.1	* 11.1	4.2	4.5	7.4	5.2	* 2.3	2.5
May	* 0.9	5.4	6.3	3.5	9.8	* 19.3	4.2	4.8	8.1	5.6	* 3.8	2.5
June	* 0.7	5.0	5.7	3.3	9.0	* 16.2	4.0	4.4	7.3	5.1	* 2.8	2.3
July	* 0.7	4.2	4.9	2.3	7.3	* 18.1	3.3	3.7	5.5	4.1	* 2.9	1.9
August	* 0.7	4.5	5.1	2.0	7.1	* 22.4	3.5	3.9	4.3	4.0	* 2.7	2.0

LABOUR FORCE STATUS (AGED 15 AND OVER)—New South Wales(a)

SEASONALLY ADJUSTED.....

TREND.....

Month	SEASONALLY ADJUSTED.....					TREND.....					Civilian population aged 15 and over '000
	Employed full time '000	Total employed '000	Total unemployed '000	Unemp- loyment rate %	Partic- ipation rate %	Employed full time '000	Total employed '000	Total unemployed '000	Unemp- loyment rate %	Partic- ipation rate %	
MALES											
1999											
June	1 466.9	1 670.6	112.2	6.3	71.5	1 473.4	1 672.4	113.9	6.4	71.7	2 493.4
July	1 482.6	1 681.1	109.6	6.1	71.7	1 480.4	1 677.0	113.3	6.3	71.7	2 496.4
August	1 490.0	1 678.8	115.2	6.4	71.8	1 487.3	1 680.9	113.0	6.3	71.8	2 499.4
September	1 491.4	1 684.6	121.7	6.7	72.2	1 493.5	1 683.8	112.4	6.3	71.8	2 502.4
October	1 499.2	1 689.0	110.2	6.1	71.8	1 497.9	1 685.5	111.7	6.2	71.7	2 506.4
November	1 502.4	1 686.4	97.0	5.4	71.0	1 500.3	1 686.8	110.8	6.2	71.6	2 510.5
December	1 505.3	1 688.3	118.2	6.5	71.8	1 500.8	1 689.0	109.6	6.1	71.5	2 514.5
2000											
January	1 495.8	1 685.9	111.5	6.2	71.4	1 500.9	1 692.9	108.3	6.0	71.5	2 517.7
February	1 503.5	1 701.9	103.3	5.7	71.6	1 502.0	1 698.8	107.1	5.9	71.6	2 520.9
March	1 497.8	1 701.6	109.7	6.1	71.8	1 504.5	1 705.7	106.2	5.9	71.8	2 524.0
April	1 507.5	1 715.6	102.7	5.6	71.9	1 508.4	1 712.5	105.1	5.8	71.9	2 527.6
May	1 514.2	1 724.1	100.9	5.5	72.1	1 512.9	1 717.9	104.0	5.7	72.0	2 531.1
June	1 525.0	1 721.3	104.4	5.7	72.0	1 517.0	1 721.6	103.6	5.7	72.0	2 534.7
July	1 518.7	1 725.8	107.9	5.9	72.3	1 520.4	1 724.1	103.5	5.7	72.0	2 537.6
August	1 519.5	1 718.6	101.0	5.6	71.6	1 522.5	1 724.9	103.6	5.7	72.0	2 540.5
FEMALES											
1999											
June	752.6	1 256.2	89.4	6.6	52.2	741.8	1 253.4	91.0	6.8	52.1	2 579.1
July	746.1	1 257.1	82.4	6.2	51.9	743.7	1 257.1	89.9	6.7	52.2	2 582.0
August	740.3	1 257.3	93.1	6.9	52.2	746.3	1 261.2	88.5	6.6	52.2	2 584.9
September	743.3	1 264.4	96.1	7.1	52.6	749.6	1 265.8	86.8	6.4	52.3	2 587.9
October	757.5	1 277.9	79.8	5.9	52.4	753.2	1 270.7	84.9	6.3	52.3	2 591.3
November	755.5	1 274.1	79.9	5.9	52.2	757.4	1 276.7	82.9	6.1	52.4	2 594.8
December	768.1	1 283.2	81.7	6.0	52.5	762.8	1 284.4	81.2	5.9	52.6	2 598.3
2000											
January	774.1	1 288.0	78.0	5.7	52.5	768.6	1 293.0	80.8	5.9	52.8	2 600.7
February	761.0	1 302.6	83.1	6.0	53.2	774.3	1 301.6	81.2	5.9	53.1	2 603.2
March	777.8	1 312.3	83.7	6.0	53.6	780.1	1 309.8	81.9	5.9	53.4	2 605.6
April	795.0	1 322.7	79.0	5.6	53.7	786.0	1 317.4	81.5	5.8	53.6	2 608.4
May	796.6	1 329.3	84.2	6.0	54.1	791.7	1 324.1	80.2	5.7	53.8	2 611.2
June	789.5	1 317.1	83.5	6.0	53.6	796.9	1 330.3	78.4	5.6	53.9	2 614.0
July	802.3	1 334.5	65.5	4.7	53.5	801.2	1 336.2	76.6	5.4	54.0	2 616.7
August	805.7	1 351.7	77.6	5.4	54.6	805.0	1 341.0	74.7	5.3	54.1	2 619.3
PERSONS											
1999											
June	2 219.5	2 926.9	201.6	6.4	61.7	2 215.1	2 925.8	205.0	6.5	61.7	5 072.5
July	2 228.6	2 938.2	192.1	6.1	61.6	2 224.1	2 934.1	203.2	6.5	61.8	5 078.5
August	2 230.4	2 936.1	208.2	6.6	61.8	2 233.6	2 942.1	201.4	6.4	61.8	5 084.4
September	2 234.7	2 948.9	217.8	6.9	62.2	2 243.0	2 949.5	199.2	6.3	61.8	5 090.3
October	2 256.7	2 967.0	190.0	6.0	61.9	2 251.1	2 956.3	196.7	6.2	61.8	5 097.8
November	2 257.9	2 960.5	176.9	5.6	61.5	2 257.7	2 963.6	193.7	6.1	61.8	5 105.3
December	2 273.4	2 971.5	199.9	6.3	62.0	2 263.6	2 973.4	190.9	6.0	61.9	5 112.8
2000											
January	2 269.9	2 974.0	189.5	6.0	61.8	2 269.5	2 985.9	189.1	6.0	62.0	5 118.4
February	2 264.5	3 004.5	186.4	5.8	62.3	2 276.3	3 000.4	188.4	5.9	62.2	5 124.0
March	2 275.7	3 013.9	193.3	6.0	62.5	2 284.6	3 015.6	188.0	5.9	62.4	5 129.7
April	2 302.5	3 038.2	181.8	5.6	62.7	2 294.4	3 029.9	186.6	5.8	62.6	5 136.0
May	2 310.8	3 053.4	185.1	5.7	63.0	2 304.7	3 042.0	184.2	5.7	62.7	5 142.3
June	2 314.5	3 038.4	187.9	5.8	62.7	2 313.9	3 052.0	182.0	5.6	62.8	5 148.6
July	2 321.0	3 060.2	173.4	5.4	62.7	2 321.5	3 060.3	180.1	5.6	62.9	5 154.3
August	2 325.2	3 070.3	178.6	5.5	63.0	2 327.6	3 065.9	178.3	5.5	62.9	5 159.9

(a) Trend estimates for February 2000 to July 2000 have been revised.

LABOUR FORCE STATUS (AGED 15 AND OVER)—Victoria(a)

SEASONALLY ADJUSTED.....

TREND.....

Month	SEASONALLY ADJUSTED.....					TREND.....					Civilian population aged 15 and over '000
	Employed full time '000	Total employed '000	Total unemployed '000	Unemp-loyment rate %	Partic-ipation rate %	Employed full time '000	Total employed '000	Total unemployed '000	Unemp-loyment rate %	Partic-ipation rate %	
MALES											
1999											
June	1 077.6	1 247.7	101.9	7.6	73.4	1 075.5	1 236.9	104.6	7.8	73.0	1 837.7
July	1 081.7	1 242.6	100.4	7.5	73.0	1 077.3	1 239.1	102.3	7.6	72.9	1 840.0
August	1 084.3	1 239.9	100.1	7.5	72.7	1 078.8	1 240.5	99.5	7.4	72.7	1 842.3
September	1 080.9	1 243.5	96.5	7.2	72.6	1 079.6	1 240.8	96.7	7.2	72.5	1 844.7
October	1 078.3	1 242.1	91.9	6.9	72.2	1 079.6	1 240.4	94.2	7.1	72.2	1 847.6
November	1 072.6	1 230.9	93.4	7.1	71.6	1 079.5	1 240.3	92.3	6.9	72.0	1 850.5
December	1 081.6	1 244.1	95.0	7.1	72.3	1 080.4	1 241.6	90.5	6.8	71.9	1 853.5
2000											
January	1 077.4	1 240.1	87.3	6.6	71.5	1 082.2	1 244.0	89.5	6.7	71.9	1 855.6
February	1 095.9	1 255.9	83.3	6.2	72.1	1 084.5	1 246.6	89.1	6.7	71.9	1 857.8
March	1 088.3	1 248.6	89.5	6.7	71.9	1 087.1	1 249.8	89.0	6.6	72.0	1 860.0
April	1 084.1	1 255.0	92.1	6.8	72.3	1 090.0	1 254.0	88.6	6.6	72.1	1 862.2
May	1 088.5	1 250.7	92.4	6.9	72.0	1 093.3	1 258.9	88.0	6.5	72.2	1 864.3
June	1 094.2	1 258.6	85.8	6.4	72.0	1 097.2	1 264.7	87.0	6.4	72.4	1 866.5
July	1 113.0	1 281.9	79.8	5.9	72.9	1 101.4	1 270.9	85.8	6.3	72.6	1 869.0
August	1 104.4	1 281.0	85.9	6.3	73.0	1 104.5	1 276.1	84.6	6.2	72.8	1 871.5
FEMALES											
1999											
June	527.6	946.8	73.4	7.2	53.2	527.7	947.7	74.5	7.3	53.3	1 918.2
July	530.3	957.5	78.0	7.5	53.9	529.1	953.7	74.4	7.2	53.5	1 920.6
August	533.4	959.0	71.4	6.9	53.6	531.8	960.2	73.9	7.1	53.8	1 922.9
September	533.1	965.0	75.6	7.3	54.1	535.2	965.9	73.2	7.0	54.0	1 925.3
October	536.5	973.4	72.4	6.9	54.2	539.0	970.4	72.4	6.9	54.1	1 928.0
November	541.1	972.2	69.9	6.7	54.0	542.6	973.5	72.0	6.9	54.2	1 930.7
December	552.9	981.1	70.4	6.7	54.4	545.4	975.3	72.3	6.9	54.2	1 933.4
2000											
January	548.9	972.2	73.9	7.1	54.1	547.2	976.5	72.9	6.9	54.2	1 935.4
February	544.1	976.7	74.4	7.1	54.3	548.6	978.2	73.8	7.0	54.3	1 937.5
March	552.9	985.6	75.8	7.1	54.7	550.1	981.5	74.2	7.0	54.4	1 939.5
April	546.4	977.1	73.3	7.0	54.1	552.1	986.7	73.9	7.0	54.6	1 941.5
May	550.1	992.5	73.7	6.9	54.9	554.6	993.0	72.9	6.8	54.8	1 943.4
June	567.2	1 004.4	70.9	6.6	55.3	557.3	999.4	71.6	6.7	55.0	1 945.3
July	562.1	1 010.8	72.2	6.7	55.6	559.6	1 005.3	70.1	6.5	55.2	1 947.8
August	555.9	1 007.4	65.2	6.1	55.0	561.3	1 009.8	68.7	6.4	55.3	1 950.3
PERSONS											
1999											
June	1 605.2	2 194.5	175.4	7.4	63.1	1 603.2	2 184.6	179.2	7.6	62.9	3 755.9
July	1 611.9	2 200.1	178.5	7.5	63.3	1 606.4	2 192.8	176.7	7.5	63.0	3 760.6
August	1 617.7	2 198.8	171.5	7.2	63.0	1 610.5	2 200.7	173.4	7.3	63.1	3 765.3
September	1 614.0	2 208.5	172.2	7.2	63.1	1 614.7	2 206.7	169.9	7.1	63.0	3 770.0
October	1 614.8	2 215.5	164.3	6.9	63.0	1 618.6	2 210.9	166.7	7.0	63.0	3 775.6
November	1 613.7	2 203.1	163.3	6.9	62.6	1 622.1	2 213.9	164.3	6.9	62.9	3 781.2
December	1 634.5	2 225.2	165.4	6.9	63.1	1 625.9	2 216.9	162.8	6.8	62.9	3 786.8
2000											
January	1 626.3	2 212.3	161.2	6.8	62.6	1 629.4	2 220.5	162.5	6.8	62.9	3 791.1
February	1 639.9	2 232.6	157.8	6.6	63.0	1 633.1	2 224.8	162.9	6.8	62.9	3 795.3
March	1 641.2	2 234.3	165.3	6.9	63.2	1 637.2	2 231.4	163.2	6.8	63.0	3 799.6
April	1 630.5	2 232.0	165.4	6.9	63.0	1 642.0	2 240.7	162.6	6.8	63.2	3 803.6
May	1 638.6	2 243.2	166.1	6.9	63.3	1 647.9	2 251.9	160.9	6.7	63.4	3 807.7
June	1 661.3	2 263.0	156.7	6.5	63.5	1 654.5	2 264.1	158.5	6.5	63.5	3 811.8
July	1 675.2	2 292.7	151.9	6.2	64.1	1 661.0	2 276.1	155.9	6.4	63.7	3 816.8
August	1 660.3	2 288.3	151.1	6.2	63.8	1 665.8	2 285.9	153.3	6.3	63.9	3 821.8

(a) Trend estimates for February 2000 to July 2000 have been revised.

LABOUR FORCE STATUS (AGED 15 AND OVER)—Queensland(a)

SEASONALLY ADJUSTED.....

TREND.....

Month	SEASONALLY ADJUSTED.....					TREND.....					Civilian population aged 15 and over '000
	Employed full time '000	Total employed '000	Total unemployed '000	Unemployment rate %	Participation rate %	Employed full time '000	Total employed '000	Total unemployed '000	Unemployment rate %	Participation rate %	
MALES											
1999											
June	817.4	927.3	81.7	8.1	74.1	814.0	927.3	81.1	8.0	74.0	1 362.4
July	816.9	924.4	80.2	8.0	73.6	815.4	926.4	81.2	8.1	73.8	1 364.6
August	819.1	933.5	79.1	7.8	74.1	816.2	925.4	81.1	8.1	73.6	1 366.8
September	817.4	922.1	82.2	8.2	73.4	816.1	925.1	81.0	8.1	73.5	1 369.1
October	805.4	914.4	83.4	8.4	72.7	815.5	925.6	80.9	8.0	73.4	1 371.6
November	820.4	936.1	76.2	7.5	73.7	814.5	926.9	81.1	8.0	73.4	1 374.1
December	818.2	927.7	83.5	8.3	73.5	813.8	928.8	81.3	8.0	73.4	1 376.6
2000											
January	811.3	932.2	83.7	8.2	73.7	814.3	931.6	81.4	8.0	73.5	1 378.6
February	811.9	937.2	78.5	7.7	73.6	816.1	935.0	81.4	8.0	73.6	1 380.7
March	819.2	931.6	81.2	8.0	73.2	818.9	938.7	81.3	8.0	73.8	1 382.7
April	819.4	942.8	84.7	8.2	74.2	822.2	942.1	81.2	7.9	73.9	1 384.5
May	828.8	950.2	77.1	7.5	74.1	825.4	945.4	80.9	7.9	74.0	1 386.2
June	834.8	949.2	82.0	8.0	74.3	827.9	948.2	80.6	7.8	74.1	1 388.0
July	827.0	951.6	81.8	7.9	74.3	829.5	950.0	80.3	7.8	74.1	1 390.1
August	825.6	946.8	78.1	7.6	73.6	830.3	951.2	80.1	7.8	74.1	1 392.2
FEMALES											
1999											
June	397.0	714.4	64.5	8.3	56.1	394.3	716.5	62.1	8.0	56.1	1 387.5
July	394.2	716.9	61.5	7.9	56.0	393.4	718.2	62.7	8.0	56.2	1 389.7
August	385.6	720.0	58.5	7.5	55.9	392.7	720.1	63.8	8.1	56.3	1 391.9
September	393.1	720.9	65.5	8.3	56.4	392.8	722.3	64.7	8.2	56.4	1 394.1
October	398.9	726.2	70.8	8.9	57.1	393.8	724.7	65.4	8.3	56.6	1 396.6
November	392.9	726.0	65.3	8.2	56.6	395.2	726.7	65.6	8.3	56.6	1 399.1
December	395.2	731.6	66.2	8.3	56.9	396.6	728.3	65.5	8.3	56.6	1 401.6
2000											
January	401.1	728.3	62.5	7.9	56.3	397.4	729.2	65.2	8.2	56.6	1 403.8
February	395.0	730.4	60.3	7.6	56.2	397.5	729.7	64.6	8.1	56.5	1 405.9
March	401.0	726.7	69.0	8.7	56.5	397.8	730.8	63.9	8.0	56.4	1 408.1
April	398.0	736.6	64.0	8.0	56.8	398.9	733.2	63.3	7.9	56.5	1 410.2
May	398.4	736.2	64.2	8.0	56.7	400.8	736.7	62.4	7.8	56.6	1 412.3
June	396.2	730.9	57.6	7.3	55.7	403.3	741.0	61.2	7.6	56.7	1 414.4
July	413.8	754.2	58.9	7.2	57.4	406.2	745.6	60.2	7.5	56.9	1 416.7
August	412.3	753.6	60.6	7.4	57.4	409.3	749.7	59.3	7.3	57.0	1 419.0
PERSONS											
1999											
June	1 214.5	1 641.7	146.3	8.2	65.0	1 208.3	1 643.8	143.1	8.0	65.0	2 749.9
July	1 211.1	1 641.2	141.7	7.9	64.7	1 208.7	1 644.6	143.9	8.0	64.9	2 754.3
August	1 204.7	1 653.5	137.6	7.7	64.9	1 208.9	1 645.5	144.9	8.1	64.9	2 758.7
September	1 210.4	1 643.0	147.7	8.2	64.8	1 208.9	1 647.4	145.7	8.1	64.9	2 763.2
October	1 204.3	1 640.6	154.2	8.6	64.8	1 209.2	1 650.3	146.3	8.1	64.9	2 768.2
November	1 213.2	1 662.1	141.4	7.8	65.0	1 209.7	1 653.6	146.7	8.1	64.9	2 773.2
December	1 213.3	1 659.3	149.8	8.3	65.1	1 210.4	1 657.2	146.9	8.1	64.9	2 778.2
2000											
January	1 212.4	1 660.5	146.2	8.1	64.9	1 211.7	1 660.8	146.6	8.1	65.0	2 782.4
February	1 206.9	1 667.6	138.8	7.7	64.8	1 213.6	1 664.7	146.0	8.1	65.0	2 786.6
March	1 220.2	1 658.3	150.1	8.3	64.8	1 216.7	1 669.5	145.3	8.0	65.0	2 790.8
April	1 217.4	1 679.5	148.7	8.1	65.4	1 221.1	1 675.3	144.5	7.9	65.1	2 794.7
May	1 227.3	1 686.4	141.3	7.7	65.3	1 226.2	1 682.2	143.3	7.8	65.2	2 798.6
June	1 231.0	1 680.0	139.6	7.7	64.9	1 231.2	1 689.2	141.8	7.7	65.3	2 802.4
July	1 240.7	1 705.8	140.6	7.6	65.8	1 235.7	1 695.6	140.5	7.6	65.4	2 806.8
August	1 237.9	1 700.4	138.7	7.5	65.4	1 239.6	1 700.9	139.4	7.6	65.5	2 811.1

(a) Trend estimates for February 2000 to July 2000 have been revised.

LABOUR FORCE STATUS (AGED 15 AND OVER)—South Australia(a)

SEASONALLY ADJUSTED.....

TREND.....

Month	SEASONALLY ADJUSTED.....					TREND.....					Civilian population aged 15 and over '000
	Employed full time '000	Total employed '000	Total unemployed '000	Unemp- loyment rate %	Partic- ipation rate %	Employed full time '000	Total employed '000	Total unemployed '000	Unemp- loyment rate %	Partic- ipation rate %	
MALES											
1999											
June	319.4	374.5	33.6	8.2	69.7	319.7	372.9	34.9	8.5	69.7	585.3
July	318.4	373.9	33.2	8.1	69.5	318.2	373.2	34.6	8.5	69.6	585.7
August	317.0	372.8	36.8	9.0	69.9	316.8	373.3	34.7	8.5	69.6	586.0
September	316.4	373.3	33.2	8.2	69.3	315.8	373.5	34.9	8.5	69.7	586.4
October	314.0	373.4	37.4	9.1	70.0	315.8	374.1	35.1	8.6	69.7	586.8
November	316.2	372.5	34.5	8.5	69.3	316.9	375.4	35.0	8.5	69.9	587.1
December	319.8	380.8	34.7	8.3	70.7	319.2	377.3	34.8	8.4	70.1	587.5
2000											
January	317.9	376.9	33.7	8.2	69.8	322.1	379.2	34.7	8.4	70.4	587.8
February	329.0	382.0	36.0	8.6	71.1	325.0	380.7	35.0	8.4	70.7	588.1
March	330.1	383.6	33.1	7.9	70.8	327.1	381.6	35.4	8.5	70.9	588.4
April	328.5	382.2	36.2	8.6	71.1	328.4	382.0	35.7	8.6	70.9	588.8
May	326.7	381.3	38.1	9.1	71.2	328.9	382.2	35.8	8.6	70.9	589.2
June	328.9	380.0	36.4	8.7	70.6	329.2	382.4	35.4	8.5	70.9	589.6
July	330.3	384.3	33.8	8.1	70.9	329.5	382.8	34.8	8.3	70.8	590.0
August	329.4	383.7	32.1	7.7	70.4	329.2	382.9	34.1	8.2	70.6	590.4
FEMALES											
1999											
June	149.9	287.3	25.6	8.2	51.1	151.3	288.3	25.8	8.2	51.3	611.9
July	151.4	290.5	25.0	7.9	51.5	151.8	289.3	25.8	8.2	51.5	612.3
August	153.4	291.3	25.9	8.2	51.8	152.3	290.9	25.7	8.1	51.7	612.6
September	151.4	292.6	26.2	8.2	52.0	152.6	292.8	25.3	8.0	51.9	613.0
October	153.0	290.8	25.6	8.1	51.6	152.8	294.9	24.9	7.8	52.1	613.3
November	153.1	298.0	23.4	7.3	52.4	152.9	296.4	24.6	7.7	52.3	613.6
December	156.2	300.4	24.3	7.5	52.9	152.6	297.2	24.6	7.7	52.4	613.8
2000											
January	147.3	300.1	22.8	7.1	52.6	152.1	296.8	24.9	7.7	52.4	614.0
February	152.9	292.4	27.9	8.7	52.1	151.5	295.6	25.1	7.8	52.2	614.2
March	153.8	293.2	25.1	7.9	51.8	151.4	294.1	25.3	7.9	52.0	614.4
April	150.7	293.0	25.9	8.1	51.9	151.9	293.2	25.1	7.9	51.8	614.7
May	147.9	292.4	24.8	7.8	51.6	153.1	293.4	24.7	7.8	51.7	614.9
June	158.5	291.6	22.9	7.3	51.1	154.6	294.3	24.2	7.6	51.8	615.2
July	155.1	297.9	23.6	7.3	52.2	156.3	295.5	23.9	7.5	51.9	615.5
August	160.7	299.6	24.2	7.5	52.6	157.7	297.1	23.4	7.3	52.1	615.8
PERSONS											
1999											
June	469.3	661.8	59.2	8.2	60.2	471.0	661.3	60.7	8.4	60.3	1 197.3
July	469.8	664.5	58.2	8.1	60.3	470.0	662.5	60.5	8.4	60.4	1 198.0
August	470.4	664.1	62.7	8.6	60.6	469.1	664.2	60.4	8.3	60.4	1 198.7
September	467.8	665.9	59.4	8.2	60.5	468.5	666.4	60.2	8.3	60.6	1 199.4
October	466.9	664.3	63.0	8.7	60.6	468.6	669.0	60.0	8.2	60.7	1 200.0
November	469.3	670.5	58.0	8.0	60.7	469.8	671.8	59.6	8.1	60.9	1 200.7
December	476.0	681.2	59.0	8.0	61.6	471.9	674.4	59.4	8.1	61.1	1 201.3
2000											
January	465.2	676.9	56.5	7.7	61.0	474.2	676.0	59.6	8.1	61.2	1 201.8
February	481.9	674.3	63.9	8.7	61.4	476.5	676.3	60.1	8.2	61.2	1 202.3
March	483.9	676.8	58.1	7.9	61.1	478.5	675.7	60.7	8.2	61.2	1 202.8
April	479.2	675.2	62.1	8.4	61.3	480.3	675.2	60.9	8.3	61.2	1 203.5
May	474.5	673.7	62.9	8.5	61.2	482.0	675.5	60.5	8.2	61.1	1 204.2
June	487.4	671.6	59.3	8.1	60.7	483.8	676.7	59.7	8.1	61.1	1 204.8
July	485.4	682.3	57.5	7.8	61.4	485.8	678.3	58.7	8.0	61.1	1 205.5
August	490.1	683.3	56.3	7.6	61.3	486.9	680.0	57.5	7.8	61.2	1 206.1

(a) Trend estimates for February 2000 to July 2000 have been revised.

LABOUR FORCE STATUS (AGED 15 AND OVER)—Western Australia(a)

SEASONALLY ADJUSTED.....

TREND.....

Month	SEASONALLY ADJUSTED.....					TREND.....					Civilian population aged 15 and over '000
	Employed full time '000	Total employed '000	Total unemployed '000	Unemp- loyment rate %	Partic- ipation rate %	Employed full time '000	Total employed '000	Total unemployed '000	Unemp- loyment rate %	Partic- ipation rate %	
MALES											
1999											
June	444.0	508.9	38.4	7.0	74.9	444.9	511.3	37.8	6.9	75.2	730.2
July	446.2	512.6	36.9	6.7	75.1	446.2	512.6	38.1	6.9	75.3	731.4
August	448.4	514.9	37.5	6.8	75.4	448.2	514.5	38.7	7.0	75.5	732.5
September	449.7	516.0	40.6	7.3	75.9	450.6	516.8	39.4	7.1	75.8	733.7
October	454.2	521.4	41.2	7.3	76.5	453.0	519.3	39.9	7.1	76.1	735.1
November	456.1	520.8	41.3	7.3	76.3	455.3	521.5	40.3	7.2	76.3	736.5
December	458.4	523.7	36.1	6.5	75.9	457.1	523.3	40.3	7.1	76.4	737.9
2000											
January	453.8	522.1	42.4	7.5	76.4	458.5	524.6	39.8	7.0	76.4	738.8
February	461.9	528.4	39.1	6.9	76.7	459.1	525.3	38.7	6.9	76.3	739.7
March	460.5	525.7	38.2	6.8	76.1	459.0	525.7	37.5	6.7	76.0	740.7
April	460.1	526.2	36.8	6.5	75.9	458.5	525.7	36.5	6.5	75.8	741.4
May	455.5	523.8	34.3	6.1	75.2	457.9	525.7	35.7	6.4	75.6	742.1
June	455.0	525.0	32.7	5.9	75.1	457.3	525.7	35.3	6.3	75.5	742.8
July	458.7	527.6	35.5	6.3	75.7	457.0	525.8	35.3	6.3	75.4	743.7
August	457.1	525.4	39.3	7.0	75.8	456.4	525.6	35.8	6.4	75.4	744.7
FEMALES											
1999											
June	204.8	391.7	24.1	5.8	56.9	202.9	388.6	26.7	6.4	56.8	730.8
July	205.3	391.5	25.9	6.2	57.0	204.9	390.5	26.2	6.3	56.9	731.9
August	205.9	389.8	26.2	6.3	56.7	207.1	392.7	25.9	6.2	57.1	733.0
September	205.7	393.5	26.9	6.4	57.3	209.2	395.3	25.8	6.1	57.4	734.1
October	212.0	396.4	25.9	6.1	57.4	211.0	398.0	25.6	6.0	57.6	735.4
November	218.7	405.6	26.2	6.1	58.6	212.5	400.4	25.2	5.9	57.8	736.7
December	211.6	402.4	23.9	5.6	57.8	213.5	402.0	25.0	5.9	57.9	738.0
2000											
January	210.6	401.9	24.9	5.8	57.8	213.5	402.6	25.3	5.9	57.9	738.9
February	213.1	401.5	23.5	5.5	57.4	212.7	402.0	26.1	6.1	57.9	739.9
March	213.1	401.3	26.7	6.2	57.8	211.5	400.9	26.9	6.3	57.7	740.9
April	213.0	400.5	32.4	7.5	58.4	210.3	400.0	27.4	6.4	57.6	741.8
May	206.9	397.6	27.4	6.4	57.2	209.5	399.7	27.3	6.4	57.5	742.6
June	204.5	400.8	25.7	6.0	57.4	208.9	399.9	26.8	6.3	57.4	743.4
July	211.3	396.9	24.7	5.9	56.6	208.5	400.3	26.0	6.1	57.3	744.5
August	210.0	405.3	24.5	5.7	57.7	208.3	400.8	25.3	5.9	57.2	745.5
PERSONS											
1999											
June	648.8	900.6	62.4	6.5	65.9	647.8	899.8	64.4	6.7	66.0	1 461.0
July	651.5	904.1	62.7	6.5	66.1	651.0	903.1	64.3	6.6	66.1	1 463.3
August	654.3	904.7	63.7	6.6	66.1	655.2	907.2	64.6	6.6	66.3	1 465.6
September	655.4	909.5	67.5	6.9	66.6	659.8	912.1	65.2	6.7	66.6	1 467.8
October	666.2	917.8	67.1	6.8	67.0	664.1	917.2	65.5	6.7	66.8	1 470.5
November	674.8	926.4	67.5	6.8	67.5	667.8	921.9	65.5	6.6	67.0	1 473.2
December	670.0	926.1	60.1	6.1	66.8	670.6	925.3	65.3	6.6	67.1	1 475.9
2000											
January	664.4	924.0	67.3	6.8	67.1	672.0	927.1	65.1	6.6	67.1	1 477.8
February	674.9	929.9	62.6	6.3	67.1	671.8	927.4	64.9	6.5	67.1	1 479.7
March	673.6	927.0	64.9	6.5	66.9	670.5	926.6	64.5	6.5	66.9	1 481.6
April	673.1	926.7	69.2	7.0	67.1	668.8	925.8	63.9	6.5	66.7	1 483.1
May	662.4	921.4	61.6	6.3	66.2	667.4	925.5	63.0	6.4	66.6	1 484.7
June	659.5	925.8	58.5	5.9	66.2	666.2	925.6	62.1	6.3	66.4	1 486.2
July	669.9	924.6	60.2	6.1	66.2	665.5	926.0	61.3	6.2	66.4	1 488.2
August	667.1	930.7	63.7	6.4	66.7	664.7	926.5	61.0	6.2	66.3	1 490.2

(a) Trend estimates for February 2000 to July 2000 have been revised.

LABOUR FORCE STATUS (AGED 15 AND OVER)—Tasmania(a)

SEASONALLY ADJUSTED.....

TREND.....

Month	SEASONALLY ADJUSTED.....					TREND.....					Civilian population aged 15 and over '000
	Employed full time '000	Total employed '000	Total unemployed '000	Unemployment rate %	Participation rate %	Employed full time '000	Total employed '000	Total unemployed '000	Unemployment rate %	Participation rate %	
MALES											
1999											
June	94.5	111.0	13.4	10.8	69.0	94.7	110.1	13.3	10.8	68.5	180.3
July	95.1	110.5	12.7	10.3	68.3	95.7	110.4	12.9	10.5	68.4	180.2
August	97.4	110.5	11.5	9.4	67.7	96.5	110.4	12.7	10.3	68.3	180.2
September	97.1	110.2	13.1	10.6	68.4	96.9	110.4	12.6	10.3	68.3	180.2
October	96.4	109.8	12.5	10.2	67.9	97.0	110.2	12.6	10.3	68.2	180.2
November	97.2	109.9	13.5	10.9	68.5	96.6	110.1	12.5	10.2	68.0	180.2
December	96.5	110.5	12.4	10.1	68.2	96.0	109.9	12.2	10.0	67.8	180.2
2000											
January	95.6	109.8	11.8	9.7	67.5	95.3	109.7	11.9	9.7	67.5	180.2
February	93.5	109.7	10.9	9.1	66.9	94.8	109.5	11.5	9.5	67.2	180.2
March	94.2	109.3	11.0	9.1	66.7	94.5	109.4	11.5	9.5	67.0	180.3
April	94.1	108.5	11.6	9.7	66.6	94.6	109.4	11.6	9.6	67.1	180.3
May	95.3	109.3	11.9	9.8	67.2	94.7	109.6	12.0	9.9	67.4	180.4
June	95.6	110.2	13.6	11.0	68.6	94.8	109.9	12.4	10.1	67.8	180.4
July	95.1	110.8	11.6	9.5	67.8	94.8	110.2	12.7	10.4	68.1	180.5
August	93.5	110.5	13.6	11.0	68.7	94.8	110.5	13.1	10.6	68.5	180.6
FEMALES											
1999											
June	43.6	86.4	7.4	7.9	49.5	44.3	85.8	7.3	7.9	49.1	189.7
July	44.0	85.5	6.6	7.1	48.5	44.6	85.9	7.3	7.8	49.1	189.8
August	45.0	86.4	7.2	7.7	49.3	44.7	86.2	7.3	7.8	49.3	189.8
September	45.7	86.8	7.5	8.0	49.7	44.7	86.7	7.4	7.8	49.6	189.8
October	44.5	86.6	7.6	8.1	49.6	44.4	87.3	7.5	7.9	50.0	189.8
November	43.9	88.0	8.0	8.4	50.6	43.9	88.0	7.7	8.0	50.4	189.9
December	42.9	88.9	7.6	7.9	50.8	43.5	88.5	7.8	8.1	50.7	189.9
2000											
January	43.2	89.8	7.9	8.1	51.4	43.2	88.9	8.0	8.3	51.0	190.0
February	42.7	88.3	7.8	8.1	50.6	43.3	89.1	8.2	8.4	51.2	190.0
March	44.0	89.9	8.3	8.5	51.7	43.7	89.2	8.3	8.5	51.3	190.1
April	43.7	88.2	9.2	9.4	51.2	44.2	89.1	8.3	8.5	51.2	190.2
May	45.1	88.7	8.6	8.9	51.2	44.5	89.1	8.2	8.5	51.2	190.3
June	46.2	90.7	7.2	7.4	51.4	44.7	89.1	8.1	8.4	51.1	190.3
July	43.4	88.6	7.5	7.8	50.5	44.7	89.1	8.0	8.3	51.0	190.4
August	44.3	88.7	8.6	8.8	51.1	44.7	89.1	8.0	8.2	51.0	190.5
PERSONS											
1999											
June	138.1	197.4	20.9	9.6	59.0	139.0	195.9	20.7	9.5	58.5	370.0
July	139.1	196.0	19.2	8.9	58.2	140.3	196.3	20.2	9.3	58.5	370.0
August	142.5	196.8	18.6	8.6	58.2	141.2	196.7	20.0	9.2	58.6	370.0
September	142.8	197.0	20.6	9.5	58.8	141.6	197.1	20.0	9.2	58.7	370.0
October	140.9	196.4	20.2	9.3	58.5	141.4	197.5	20.1	9.2	58.8	370.0
November	141.0	197.9	21.5	9.8	59.3	140.6	198.1	20.2	9.2	59.0	370.0
December	139.4	199.4	20.0	9.1	59.3	139.4	198.5	20.1	9.2	59.0	370.1
2000											
January	138.8	199.6	19.6	9.0	59.2	138.5	198.6	19.9	9.1	59.0	370.2
February	136.2	198.0	18.7	8.6	58.5	138.1	198.6	19.7	9.0	59.0	370.3
March	138.2	199.2	19.3	8.9	59.0	138.3	198.5	19.7	9.0	58.9	370.4
April	137.8	196.7	20.8	9.6	58.7	138.7	198.5	20.0	9.1	59.0	370.5
May	140.4	198.0	20.6	9.4	59.0	139.2	198.7	20.2	9.2	59.1	370.6
June	141.8	200.9	20.8	9.4	59.8	139.5	199.0	20.5	9.3	59.2	370.8
July	138.5	199.5	19.1	8.7	58.9	139.5	199.3	20.8	9.4	59.3	370.9
August	137.8	199.1	22.2	10.0	59.6	139.5	199.6	21.0	9.5	59.5	371.1

(a) Trend estimates for February 2000 to July 2000 have been revised.

LABOUR FORCE STATUS (AGED 15 AND OVER)—Northern Territory(a)

TREND.....

Month	Employed full time '000	Total employed '000	Total unemployed '000	Unemp- loyment rate %	Partic- ipation rate %	Civilian population aged 15 and over '000
MALES						
1999						
June	46.4	53.8	1.9	3.5	76.8	72.7
July	46.5	53.7	1.8	3.3	76.3	72.8
August	46.6	53.6	1.8	3.2	76.0	72.9
September	46.5	53.4	1.9	3.4	75.8	72.9
October	46.2	53.0	2.0	3.7	75.4	73.0
November	45.7	52.5	2.2	4.1	75.0	73.0
December	45.2	51.9	2.4	4.3	74.3	73.0
2000						
January	44.8	51.5	2.4	4.5	73.7	73.1
February	44.5	51.2	2.5	4.6	73.4	73.2
March	44.4	51.1	2.5	4.7	73.2	73.3
April	44.3	50.9	2.6	4.9	73.2	73.3
May	44.2	50.8	2.8	5.1	73.1	73.2
June	44.0	50.8	2.9	5.3	73.1	73.2
July	43.9	50.8	2.9	5.4	73.2	73.4
August	43.8	50.8	2.9	5.4	73.2	73.5
FEMALES						
1999						
June	26.6	40.8	2.0	4.8	64.9	66.0
July	26.8	40.8	2.0	4.8	64.9	66.1
August	27.1	40.8	2.0	4.7	64.7	66.1
September	27.3	40.7	2.0	4.7	64.4	66.2
October	27.5	40.4	2.0	4.8	64.0	66.3
November	27.6	40.2	2.0	4.8	63.5	66.4
December	27.7	40.0	2.1	4.9	63.3	66.5
2000						
January	27.9	40.0	2.1	5.0	63.2	66.6
February	28.1	40.1	2.1	5.1	63.4	66.7
March	28.2	40.2	2.2	5.1	63.5	66.7
April	28.2	40.2	2.2	5.1	63.3	66.8
May	27.9	39.9	2.1	5.0	62.8	66.9
June	27.6	39.6	2.0	4.8	62.1	67.0
July	27.1	39.3	1.9	4.6	61.4	67.1
August	26.7	39.0	1.8	4.4	60.8	67.1
PERSONS						
1999						
June	73.0	94.7	4.0	4.0	71.1	138.7
July	73.3	94.5	3.9	3.9	70.9	138.9
August	73.6	94.4	3.8	3.9	70.6	139.0
September	73.8	94.1	3.9	4.0	70.4	139.2
October	73.6	93.4	4.1	4.2	70.0	139.3
November	73.3	92.7	4.3	4.4	69.5	139.4
December	73.0	92.0	4.4	4.6	69.1	139.5
2000						
January	72.7	91.5	4.5	4.7	68.7	139.7
February	72.6	91.3	4.6	4.8	68.6	139.9
March	72.7	91.3	4.7	4.9	68.6	140.0
April	72.5	91.1	4.8	5.0	68.5	140.1
May	72.1	90.8	4.9	5.1	68.2	140.2
June	71.6	90.4	4.9	5.1	67.9	140.3
July	71.1	90.1	4.8	5.1	67.6	140.4
August	70.5	89.8	4.7	5.0	67.3	140.6

(a) Trend estimates for February 2000 to July 2000 have been revised. Estimates for the most recent three months may be subject to significant revisions as data for later months become available.

LABOUR FORCE STATUS (AGED 15 AND OVER)—Australian Capital Territory(a)

TREND.....

Month	Employed full time '000	Total employed '000	Total unemployed '000	Unemp- loyment rate %	Partic- ipation rate %	Civilian population aged 15 and over '000
MALES						
1999						
June	69.1	82.8	5.9	6.7	77.3	114.7
July	69.6	83.4	5.9	6.6	77.7	114.9
August	70.1	84.2	5.8	6.4	78.2	115.1
September	70.6	84.9	5.7	6.3	78.6	115.3
October	71.1	85.4	5.6	6.2	78.9	115.4
November	71.5	86.0	5.5	6.0	79.2	115.5
December	72.0	86.4	5.4	5.9	79.2	115.7
2000						
January	72.5	86.7	5.3	5.8	79.2	116.1
February	72.9	86.8	5.3	5.8	79.1	116.6
March	73.4	87.0	5.4	5.8	78.9	117.0
April	73.8	87.2	5.4	5.8	78.8	117.5
May	74.2	87.5	5.3	5.7	78.7	118.0
June	74.6	87.8	5.1	5.5	78.5	118.6
July	75.0	88.1	5.0	5.3	78.4	118.7
August	75.3	88.5	4.8	5.1	78.4	118.9
FEMALES						
1999						
June	48.0	76.2	3.8	4.8	65.6	122.0
July	48.8	76.8	3.8	4.7	66.0	122.1
August	49.6	77.4	3.9	4.8	66.5	122.2
September	50.2	77.9	4.1	5.0	67.0	122.3
October	50.5	78.3	4.2	5.1	67.4	122.4
November	50.8	78.6	4.2	5.1	67.6	122.6
December	51.0	78.6	4.2	5.1	67.5	122.7
2000						
January	51.4	78.6	4.1	5.0	67.3	122.9
February	51.7	78.5	4.1	4.9	67.1	123.1
March	52.0	78.4	4.1	4.9	66.9	123.2
April	52.0	78.5	4.1	4.9	66.9	123.5
May	52.0	78.8	4.0	4.8	66.9	123.7
June	52.0	79.4	3.8	4.6	67.2	123.9
July	52.0	80.1	3.6	4.3	67.4	124.1
August	52.0	80.9	3.3	3.9	67.8	124.2
PERSONS						
1999						
June	117.1	159.0	9.8	5.8	71.3	236.8
July	118.4	160.3	9.7	5.7	71.7	237.1
August	119.7	161.6	9.7	5.7	72.2	237.3
September	120.8	162.8	9.8	5.7	72.6	237.6
October	121.6	163.7	9.8	5.7	73.0	237.9
November	122.3	164.5	9.7	5.6	73.2	238.1
December	123.0	165.0	9.6	5.5	73.2	238.3
2000						
January	123.8	165.3	9.4	5.4	73.1	239.0
February	124.6	165.3	9.4	5.4	72.9	239.6
March	125.3	165.4	9.4	5.4	72.8	240.3
April	125.9	165.7	9.4	5.4	72.7	241.0
May	126.2	166.3	9.3	5.3	72.7	241.7
June	126.6	167.2	9.0	5.1	72.7	242.5
July	126.9	168.2	8.5	4.8	72.8	242.8
August	127.3	169.3	8.1	4.6	73.0	243.1

(a) Trend estimates for February 2000 to July 2000 have been revised. Estimates for the most recent three months may be subject to significant revisions as data for later months become available.

EXPLANATORY NOTES

- 1** This publication contains preliminary estimates of the civilian labour force derived from the Labour Force Survey component of the monthly population survey. Estimates for the current month are preliminary and subject to revision. Revised estimates for the current month and more detailed estimates will be published in *Labour Force, Australia* (Cat. no. 6203.0).
- 2** The population survey is based on a multi-stage area sample of private dwellings (currently about 30,000 houses, flats, etc.) and a list sample of non-private dwellings (hotels, motels, etc.), and covers about 0.5% of the population of Australia. The information is obtained from the occupants of selected dwellings by specially trained interviewers. The interviews are generally conducted during the two weeks beginning on the Monday between the 6th and 12th of each month. The information obtained relates to the week before the interview (i.e. the reference week).
- 3** The ABS has introduced the use of telephone interviewing into the Labour Force Survey. Households selected for the Labour Force Survey are interviewed each month for 8 months, with one eighth of the sample being replaced each month. The first interview is conducted face-to-face. Subsequent interviews are conducted by telephone (if acceptable to the respondent). Telephone interviewing was phased in for each new sample group from August 1996 to February 1997.
- 4** During the period of implementation, the new method produced different estimates than would have been obtained under the old methodology. The effect peaked in November 1996, when it is estimated that the published estimate of total employment was about 36,000 to 48,000 lower than would have been measured under the old methodology. The effect dissipated over the final months of implementation and was no longer discernible from February 1997. Therefore, the estimates for February 1997 and onwards are directly comparable to estimates for periods prior to August 1996.
- 5** The Labour Force Survey includes all persons aged 15 and over except members of the permanent defence forces, certain diplomatic personnel of overseas governments customarily excluded from census and estimated populations, overseas residents in Australia, and members of non-Australian defence forces (and their dependants) stationed in Australia.
- 6** In the Labour Force Survey, coverage rules are applied which aim to ensure that each person is associated with only one dwelling, and hence has only one chance of selection. The coverage rules are necessarily a balance between theoretical and operational considerations. Nevertheless, the chance of a person being enumerated at two separate dwellings in the survey is considered to be negligible.
- 7** Labour Force Survey estimates are calculated in such a way as to add up to independent estimates of the civilian population aged 15 and over (population benchmarks). From February 1999, labour force estimates have been compiled using benchmarks based on the results of the 1996 Census of Population and Housing. Small revisions were made to many of the historical estimates from January 1995 to January 1999.
- 8** From April 1986, the definition of employed persons was changed to include persons who worked without pay between 1 and 14 hours per week in a family business or on a farm (i.e. contributing family workers). For further information, see paragraphs 36 and 37 of the Explanatory Notes to the February 1987 issue of *Labour Force, Australia* (Cat. no. 6203.0).

EXPLANATORY NOTES

SURVEY SAMPLE REDESIGN

9 The Labour Force Survey sample was last reselected using information collected in the 1996 Census of Population and Housing.

10 The bulk of the new sample was phased in over the period September 1997 to April 1998, with one eighth of this portion of the sample being introduced every month. The remainder of the sample (about 15% of the total), which covers less settled areas of Australia and non-private dwellings was rotated in full for New South Wales, Victoria, Tasmania, Northern Territory and Australian Capital Territory in September 1997, and for Queensland, South Australia and Western Australia in October 1997. Such a pattern of implementation means that any changes to labour force estimates due to differences between the two samples, or any other influences, were spread over the eight months.

11 For further details, see *Information Paper: Labour Force Survey Sample Design* (Cat. no. 6269.0).

RELIABILITY OF ESTIMATES

12 Two types of error are possible in an estimate based on a sample survey: sampling error and non-sampling error.

Sampling error occurs because a sample, rather than the entire population, is surveyed. One measure of the likely difference resulting from not including all dwellings in the survey is given by the standard error. There are about two chances in three that a sample estimate will differ by less than one standard error from the figure that would have been obtained if all dwellings had been included in the survey, and about nineteen chances in twenty that the difference will be less than two standard errors. Standard errors of estimates for the latest month and of estimates of movements since the previous month are shown on pages 30 and 31. Standard errors of other estimates and other movements may be determined by using information in the Technical Notes in *Labour Force, Australia* (Cat. no. 6203.0).

Non sampling error arises from inaccuracies in collecting, recording and processing the data. Every effort is made to minimise reporting error by the careful design of questionnaires, intensive training and supervision of interviewers, and efficient data processing procedures.

SEASONAL ADJUSTMENT AND TREND ESTIMATION

13 Seasonally adjusted series are published in Tables 2, 5 and 12 to 17. Seasonal factors are reviewed annually to take account of each additional year's original data. The results of the latest review were used to compile the seasonally adjusted and trend estimates given in this publication. Information about the method of adjustment, and revised seasonally adjusted and trend estimates for all months from January 1998, were published in a feature article in the February 2000 issue of *Labour Force, Australia* (Cat. no. 6203.0).

14 Seasonal adjustment is a means of removing the estimated effects of normal seasonal variation from the series so that the effects of other influences on the series can be more clearly recognised. Seasonal adjustment does not aim to remove the irregular or non-seasonal influences which may be present in any particular month. This means that month-to-month movements of the seasonally adjusted estimates may not be reliable indicators of trend behaviour. For example, irregular factors unrelated to the trend account for more than half the seasonally adjusted movement with the following frequency:

Employment: 6 in 10 monthly movements

Unemployment: 8 in 10 monthly movements

Unemployment rate: 7 in 10 monthly movements

Participation rate: 9 in 10 monthly movements.

EXPLANATORY NOTES

SEASONAL ADJUSTMENT AND TREND ESTIMATION *continued*

15 The smoothing of seasonally adjusted series reduces the impact of the irregular component of the seasonally adjusted series, and creates trend estimates. These trend estimates are derived by applying a 13-term Henderson-weighted moving average to all months except the last six. The last six monthly trend estimates are obtained by applying surrogates of the Henderson average to the seasonally adjusted series. Trend series are used to analyse the underlying behaviour of the series over time. These are published in tables 3, 6 and 12 to 19.

16 While this smoothing technique enables estimates to be produced for the latest month, it does result in revisions to the most recent months as additional observations become available. Generally, subsequent revisions become smaller, and after three months have a negligible impact on the series. There will also be revisions as a result of the annual review of seasonal factors.

17 Trend estimates are published for the Northern Territory in table 18 and for the Australian Capital Territory in table 19. Unadjusted series for the two Territories have shown, historically, a high degree of variability, which can lead to considerable revisions to the seasonally adjusted estimates after each annual seasonal factor re-analysis. Seasonally adjusted estimates are not currently published for the two Territories. The most recent six months trend estimates are subject to revision. For the three most recent months, the revision may be relatively large. Inferences about trends drawn from smoothed seasonally adjusted (trend) estimates for months earlier than the latest three months are unlikely to be affected by month to month revisions. They may be affected by revision resulting from the annual re-analysis of seasonal factors.

18 For further information, see *A Guide to Interpreting Time Series—Monitoring 'Trends': an Overview* (Cat. no. 1348.0) or contact the Assistant Director, Time Series Analysis on (02) 6252 6345.

RELATED PUBLICATIONS

19 Users may also wish to refer to *Labour Force, Australia* (Cat. no. 6203.0). This publication contains a detailed list of related publications which are available from ABS Bookshops.

20 Current publications produced by the ABS are listed in the *Catalogue of Publications and Products* (Cat. no. 1101.0). The ABS also issues, on Tuesdays and Fridays, a *Release Advice* (Cat. no. 1105.0) which lists publications to be released in the next few days. The Catalogue and Release Advice are available from any ABS office.

UNPUBLISHED STATISTICS

21 As well as the statistics included in this and related publications, the ABS may have other relevant unpublished data available. Inquiries should be made to Mark Webb on 02 6252 6525 or to any ABS office.

EFFECTS OF ROUNDING

22 Estimates have been rounded and discrepancies may occur between sums of the component items and totals.

23 Estimates of movement shown in this publication are obtained by taking the difference of unrounded estimates. The movement estimate is then rounded to one decimal place. Therefore where a discrepancy occurs between the reported movement and the difference of the rounded estimates, the reported movement will be more accurate.

SYMBOLS AND OTHER USAGES

- * subject to sampling variability too high for most practical uses. See the Technical Notes in Cat. no. 6203.0 for more details.
- .. not applicable
- r revised
- pts percentage points

GLOSSARY

Actively looking for work	Includes writing, telephoning or applying in person to an employer for work; answering an advertisement for a job; checking factory noticeboards or the touchscreens at the Centrelink offices; being registered with Centrelink as a jobseeker; checking or registering with any other employment agency; advertising or tendering for work; and contacting friends or relatives.
Attending school	Persons aged 15 to 19 enrolled full time at secondary or high schools in the reference week.
Attending tertiary educational institution full time	Persons aged 15 to 24 enrolled full time at a TAFE college, university, or other educational institution in the reference week.
Employed	Persons aged 15 and over who, during the reference week: <ul style="list-style-type: none">■ worked for one hour or more for pay, profit, commission or payment in kind in a job or business, or on a farm (comprising employees, employers and own account workers); or■ worked for one hour or more without pay in a family business or on a farm (i.e. contributing family workers); or■ were employees who had a job but were not at work and were:<ul style="list-style-type: none">■ on paid leave,■ on leave without pay for less than four weeks up to the end of the reference week,■ stood down without pay because of bad weather or plant breakdown at their place of employment for less than four weeks up to the end of the reference week,■ on strike or locked out,■ on workers' compensation and expected to be returning to their job, or■ receiving wages or salary while undertaking full-time study; or■ were employers, own account workers or contributing family workers who had a job, business or farm, but were not at work.
Full-time workers	Employed persons who usually worked 35 hours or more a week (in all jobs) and those who, although usually working less than 35 hours a week, worked 35 hours or more during the reference week
Labour force	For any group, persons who were employed or unemployed, as defined.
Labour force status	A classification of the civilian population aged 15 and over into employed, unemployed or not in the labour force, as defined. The definitions conform closely to the international standard definitions adopted by the International Conferences of Labour Statisticians.
Not in the labour force	Persons who were not in the categories employed or unemployed as defined.
Participation rate	For any group, the labour force expressed as a percentage of the civilian population aged 15 and over in the same group.
Part-time workers	Employed persons who usually worked less than 35 hours a week and who did so during the reference week.
Seasonally adjusted series	A time series of estimates with the estimated effects of normal seasonal variation removed. See Explanatory Notes 13 to 14 for more detail.
Trend series	A smoothed seasonally adjusted series of estimates. See Explanatory Notes 15 to 17 for more detail.

G L O S S A R Y

Unemployed	Persons aged 15 and over who were not employed during the reference week, and: <ul style="list-style-type: none">■ had actively looked for full-time or part-time work at any time in the four weeks up to the end of the reference week and:<ul style="list-style-type: none">■ were available for work in the reference week, or would have been available except for temporary illness (i.e. lasting for less than four weeks to the end of the reference week), or■ were waiting to start a new job within four weeks from the end of the reference week and would have started in the reference week if the job had been available then; or■ were waiting to be called back to a full-time or part-time job from which they had been stood down without pay for less than four weeks up to the end of the reference week (including the whole of the reference week) for reasons other than bad weather or plant breakdown.
Unemployed looking for first full-time job	Unemployed persons looking for full-time work (as defined above) who had never worked full time for two weeks or more
Unemployed looking for full-time work	Unemployed persons who actively looked for full-time work, or were to resume a full-time job from which they had been stood down.
Unemployed looking for part-time work	Unemployed persons who had actively looked for part-time work only, or were to resume a part-time job from which they had been stood down.
Unemployment rate	For any group, the number of unemployed persons expressed as a percentage of the labour force in the same group.
Unemployment to population ratio	For any group, the number of unemployed persons expressed as a percentage of the civilian population in the same group.

STANDARD ERRORS

The estimates in this publication are based on information gained from the occupants of a sample survey of dwellings. Because the entire population is not surveyed, the published estimates are subject to sampling error. The most common way of quantifying such sampling error is to calculate the standard error for the published estimate or statistic.

LEVEL ESTIMATES

To illustrate, let us say the published level estimate for employed persons aged 15 to 19 is 500,000. The calculated standard error in this case is 8,700. The standard error is then used to interpret the level estimate of 500,000. For instance, the standard error of 8,700 indicates that:

- There are approximately two chances in three that the real value falls within the range 491,300 to 508,700 (500,000 + or - 8,700)
- There are approximately nineteen chances in twenty that the real value falls within the range 482,600 to 517,400 (500,000 + or - 17,400).

The real value in this case is the result we would obtain if we could enumerate the total population.

The following tables show the standard errors for this month's level estimates.

	EMPLOYED.....			UNEMPLOYED.....			Labour force	Not in labour force	Unemployment rate	Participation rate
	Full time	Part time	Total	Looking for f/t work	Looking for p/t work	Total				
	'000	'000	'000	'000	'000	'000				
NSW	18.5	10.1	22.1	5.0	3.6	5.5	22.9	16.9	0.2	0.4
Vic.	13.8	8.4	16.5	4.0	2.9	4.5	17.1	12.7	0.2	0.4
Qld	10.8	7.4	12.2	4.0	2.5	4.5	12.6	10.0	0.2	0.4
SA	5.0	3.5	5.8	1.9	1.2	2.1	5.9	5.0	0.3	0.5
WA	5.4	4.0	6.0	2.1	1.5	2.4	6.1	4.9	0.2	0.4
Tas.	1.8	1.4	2.1	0.8	0.5	0.9	2.2	1.9	0.4	0.6
NT	1.2	0.8	1.3	0.4	0.3	0.4	1.4	1.1	0.5	1.0
ACT	1.8	1.1	2.1	0.5	0.3	0.5	2.1	1.3	0.3	0.9
Males	21.3	9.7	23.2	7.1	3.8	7.6	24.3	15.3	0.1	0.3
Females	15.7	14.2	20.2	5.5	4.7	6.7	20.9	18.9	0.2	0.3
Persons	28.1	16.2	36.7	8.3	5.6	9.3	39.0	24.8	0.1	0.3

	NUMBER OF UNEMPLOYED PERSONS.....					UNEMPLOYMENT RATE.....				
	Aged 15-19 looking for f/t work	Aged 20 and over looking for f/t work	Total looking for f/t work	Looking for p/t work	Total	Aged 15-19 looking for f/t work	Aged 20 and over looking for f/t work	Total looking for f/t work	Looking for p/t work	Total
	'000	'000	'000	'000	'000	pts	pts	pts	pts	pts
NSW	2.6	4.7	5.0	3.6	5.5	2.7	0.2	0.2	0.5	0.2
Vic.	1.6	3.9	4.0	2.9	4.5	2.9	0.2	0.2	0.4	0.2
Qld	1.6	3.8	4.0	2.5	4.5	2.8	0.3	0.3	0.5	0.2
SA	0.9	1.8	1.9	1.2	2.1	3.6	0.4	0.4	0.6	0.3
WA	0.9	2.0	2.1	1.5	2.4	2.8	0.3	0.3	0.5	0.2
Tas.	0.4	0.8	0.8	0.5	0.9	4.8	0.5	0.6	0.7	0.4
NT	0.2	0.4	0.4	0.3	0.4	4.8	0.5	0.5	1.3	0.5
ACT	0.2	0.5	0.5	0.3	0.5	7.9	0.4	0.4	0.7	0.3
Males	3.0	6.8	7.1	3.8	7.6	1.8	0.2	0.2	0.5	0.1
Females	2.6	5.2	5.5	4.7	6.7	2.4	0.2	0.2	0.3	0.2
Persons	3.8	7.9	8.3	5.6	9.3	1.4	0.1	0.1	0.2	0.1

STANDARD ERRORS *continued*

MOVEMENT ESTIMATES

The following example illustrates how to use the standard error to interpret a movement estimate. Let us say that one month the published level estimate for females employed part time in Australia is 1,390,000; the next month the published level estimate is 1,400,000. The calculated standard error for the movement estimate is 13,000. The standard error is then used to interpret the published movement estimate of 10,000. For instance, the standard error of 13,000 indicates that:

- There are approximately two chances in three that the real movement over the two month period falls within the range -3,000 to 23,000 (10,000 + or - 13,000)
- There are approximately nineteen chances in twenty that the real movement falls within the range -16,000 to 36,000 (10,000 + or - 26,000).

The following tables show the standard errors for this month's movement estimates.

	EMPLOYED.....			UNEMPLOYED.....			Labour force	Not in labour force	Unemployment rate	Participation rate
	Full time	Part time	Total	Looking for f/t work	Looking for p/t work	Total				
	'000	'000	'000	'000	'000	'000				
NSW	10.0	6.8	11.0	3.7	2.7	4.2	11.2	9.4	0.1	0.2
Vic.	7.6	5.4	8.4	3.0	2.2	3.3	8.6	7.1	0.1	0.2
Qld	6.8	4.8	7.5	2.8	2.0	3.1	7.7	6.2	0.2	0.3
SA	3.1	2.3	3.5	1.3	0.9	1.5	3.6	3.1	0.2	0.3
WA	3.9	2.9	4.3	1.6	1.2	1.7	4.4	3.5	0.2	0.3
Tas.	1.2	0.9	1.4	0.6	0.4	0.7	1.4	1.3	0.3	0.4
NT	1.1	0.6	1.2	0.3	0.2	0.4	1.2	0.9	0.4	0.8
ACT	1.0	0.7	1.1	0.4	0.3	0.4	1.2	0.8	0.2	0.5
Males	14.1	7.1	14.8	5.4	3.0	5.7	15.1	10.8	0.1	0.2
Females	11.1	10.1	13.6	4.2	3.6	5.0	13.8	12.9	0.1	0.2
Persons	16.3	11.3	18.2	6.2	4.3	6.9	18.6	15.3	0.1	0.1

	NUMBER OF UNEMPLOYED PERSONS.....					UNEMPLOYMENT RATE.....				
	Aged 15-19 looking for f/t work	Aged 20 and over looking for f/t work	Total looking for f/t work	Looking for p/t work	Total	Aged 15-19 looking for f/t work	Aged 20 and over looking for f/t work	Total looking for f/t work	Looking for p/t work	Total
	'000	'000	'000	'000	'000	pts	pts	pts	pts	pts
NSW	2.0	3.5	3.7	2.7	4.2	2.1	0.2	0.2	0.3	0.1
Vic.	1.4	2.9	3.0	2.2	3.3	2.4	0.2	0.2	0.3	0.1
Qld	1.4	2.7	2.8	2.0	3.1	2.1	0.2	0.2	0.4	0.2
SA	0.7	1.3	1.3	0.9	1.5	2.8	0.3	0.3	0.4	0.2
WA	0.8	1.5	1.6	1.2	1.7	2.4	0.2	0.2	0.4	0.2
Tas.	0.3	0.6	0.6	0.4	0.7	3.8	0.4	0.4	0.6	0.3
NT	0.2	0.3	0.3	0.2	0.4	4.4	0.5	0.5	1.1	0.4
ACT	0.2	0.3	0.4	0.3	0.4	6.1	0.3	0.3	0.7	0.2
Males	2.4	5.2	5.4	3.0	5.7	1.4	0.1	0.1	0.4	0.1
Females	2.2	4.0	4.2	3.6	5.0	1.9	0.2	0.2	0.2	0.1
Persons	3.0	5.9	6.2	4.3	6.9	1.0	0.1	0.1	0.2	0.1

WHAT IF...? REVISIONS TO TREND ESTIMATES

EFFECT OF NEW SEASONALLY ADJUSTED ESTIMATES ON TREND ESTIMATES

Each time new seasonally adjusted estimates become available, trend estimates are revised (see paragraphs 13 and 14 of Explanatory Notes).

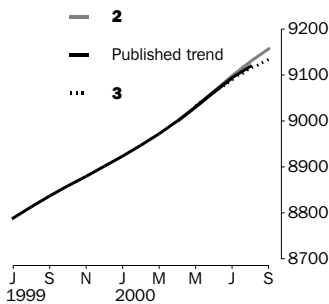
TREND REVISIONS

The examples in the tables below show four illustrative scenarios and the consequent revisions to previous trend estimates of employment and unemployment rate.

- 1** The September seasonally adjusted estimate is the same as the August estimate.
- 2** The September seasonally adjusted estimate is higher than the August estimate by:
 - +0.32% for employment
 - +1.96% for the unemployment rate
- 3** The September seasonally adjusted estimate is lower than the August estimate by:
 - -0.32% for employment
 - -1.96% for the unemployment rate
- 4** The September seasonally adjusted estimate results in a revised August trend estimate which is identical to the new September trend estimate.

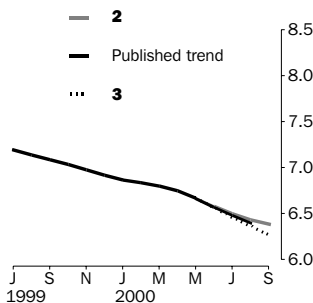
The percentage changes of 0.32% and 1.96% were chosen because they represent the average absolute monthly percentage changes in employment and the unemployment rate respectively.

EMPLOYMENT ('000)



		WHAT IF NEXT MONTH'S SEASONALLY ADJUSTED ESTIMATE IS:			
		1	2	3	4
		9 141.8	9 171.0	9 112.7	8 977.1
		<i>i.e. the same as Aug 2000</i>	<i>i.e. rises by 0.32%</i>	<i>i.e. falls by 0.32%</i>	<i>i.e. same trend for Aug & Sep</i>
TREND AS PUBLISHED					
2000	June	9 063.8	9 064.1	9 065.4	9 062.8
	July	9 094.4	9 095.1	9 099.4	9 090.7
	August	9 119.2	9 122.6	9 130.8	9 114.5
	September (new)	—	9 146.0	9 158.3	9 133.8

UNEMPLOYMENT RATE (%)



		WHAT IF NEXT MONTH'S SEASONALLY ADJUSTED ESTIMATE IS:			
		1	2	3	4
		6.4	6.5	6.3	6.9
		<i>i.e. the same as Aug 2000</i>	<i>i.e. rises by 1.96%</i>	<i>i.e. falls by 1.96%</i>	<i>i.e. same trend for Aug & Sep</i>
TREND AS PUBLISHED					
2000	June	6.6	6.6	6.6	6.6
	July	6.5	6.5	6.5	6.6
	August	6.4	6.4	6.4	6.5
	September (new)	—	6.3	6.4	6.3

FOR MORE INFORMATION...

- INTERNET* **www.abs.gov.au** the ABS web site is the best place to start for access to summary data from our latest publications, information about the ABS, advice about upcoming releases, our catalogue, and Australia Now—a statistical profile.
- LIBRARY* A range of ABS publications is available from public and tertiary libraries Australia-wide. Contact your nearest library to determine whether it has the ABS statistics you require, or visit our web site for a list of libraries.
- CPI INFOLINE* For current and historical Consumer Price Index data, call 1902 981 074 (call cost 77c per minute).
- DIAL-A-STATISTIC* For the latest figures for National Accounts, Balance of Payments, Labour Force, Average Weekly Earnings, Estimated Resident Population and the Consumer Price Index call 1900 986 400 (call cost 77c per minute).

INFORMATION SERVICE

Data which have been published and can be provided within five minutes are free of charge. Our information consultants can also help you to access the full range of ABS information—ABS user-pays services can be tailored to your needs, time frame and budget. Publications may be purchased. Specialists are on hand to help you with analytical or methodological advice.

- PHONE* **1300 135 070**
- EMAIL* **client.services@abs.gov.au**
- FAX* 1300 135 211
- POST* Client Services, ABS, GPO Box 796, Sydney 1041

WHY NOT SUBSCRIBE?

ABS subscription services provide regular, convenient and prompt deliveries of ABS publications and products as they are released. Email delivery of monthly and quarterly publications is available.

- PHONE* 1300 366 323
- EMAIL* subscriptions@abs.gov.au
- FAX* 03 9615 7848
- POST* Subscription Services, ABS, GPO Box 2796Y, Melbourne 3001



2620200008002
ISSN 1031-038X

RRP \$19.50